



Regional District of

# Fraser-Fort George

British Columbia, Canada



## Investment - Ready Community Profile



**REGIONAL DISTRICT**  
of Fraser-Fort George

# NORTHERN BC BUSINESS ADVANTAGE

Northern British Columbia is a strategically located, resource-rich economy with many competitive advantages and incentives for business.



## British Columbia has one of the most attractive investment climates for business in North America.

Manufacturers, for example, enjoy benefits such as:

- **Strong economic fundamentals** and market opportunities associated with major, long-term projects
- **Low Tax Rates** (personal and corporate) that rank BC among the lowest in Canada – complemented by sales tax exemptions on machinery and tax credits for research and development expenditures
- **Competitive Operating Costs** including low cost electricity relative to elsewhere in Canada or the US
- **Competitive Wage Rates** reflecting a balanced and growing labour pool
- **Growing Labour Supply** with government initiatives that are driving labour mobility into BC and training our existing workforce assets
- **Welcoming Communities** that keenly encourage new manufacturing and service investments
- **Financial Incentives** for capital investments and job creation in northern BC (up to \$5,000 per new job). *Contact Northern Development Initiative Trust.*

# Welcome to the Regional District of Fraser-Fort George

Our area encompasses more than 50,000 km<sup>2</sup> in central and eastern British Columbia, and is home to stunning and varied landscapes, breath-taking recreational opportunities, and a diverse economy.

Close to 100,000 thousand people call this region home, and live in one of four municipalities (Prince George, Mackenzie, McBride and Valemount) or seven unincorporated Electoral Areas that stretch north of Mackenzie, south to Hixon, east to the Alberta border and west about 50 km from Prince George.

The Regional District of Fraser-Fort George provides close to 100 local government services including fire protection, emergency planning, environmental services, utilities and land use planning as well as library and recreation facilities.

Our region has a diverse economy, with proud roots in trade, transportation and forestry. Over the years, our economy has faced change, and embraced opportunities in a number of different sectors. Today, opportunities abound in many different industries ranging from education and tourism to mining and manufacturing.

A skilled and growing labour force, integrated transportation networks, low tax rates, low cost electricity and natural gas, and an inventory of development-ready sites all contribute to make the Regional District of Fraser-Fort George your land of opportunity.

We invite you to explore all that our Region has to offer.

Art Kaehn  
Chair, Regional District of Fraser-Fort George

155 George Street  
Prince George, BC V2L 1P8  
Telephone: 250-960-4400  
[www.rdffg.bc.ca](http://www.rdffg.bc.ca)



**REGIONAL DISTRICT**  
of Fraser-Fort George



# CONTENTS

<b>1. Demographics .....</b>	<b>6</b>
Population	6
Household Income	7
Household total Income 2011 – Distribution	7
Workforce Education Attainment	8
Language Knowledge	8
<b>2. Labour Force .....</b>	<b>9</b>
Employment by Industry	9
Top Employers	10
<b>AVERAGE INCOME BY OCCUPATION – NORTHERN BC</b>	11
<b>LABOUR FORCE</b>	12
<b>EMPLOYMENT RATE</b>	12
<b>LABOUR PARTICIPATION RATE</b>	12
<b>3. Payroll Costs.....</b>	<b>13</b>
Workers Compensation – 2014	13
Employment Insurance – 2014	13
Social Insurance (Canada Pension Plan) – 2014	14
<b>4. Higher Education .....</b>	<b>15</b>
Four Year Institutions	15
Training Services	15
<b>5. Transportation .....</b>	<b>16</b>
Major Transportation Routes	16
Highways in british columbia	18
Northern Corridor Specifications	19
Highway Distances (From Prince George)	20
Railroads	20
Airports	21
Ports	25
Port Shipping Distances	28
<b>6. Industrial &amp; Commercial Land Use.....</b>	<b>29</b>
Land Zoned and Designated in Official Community Plan	29
Local Permit Approvals	29
<b>7. Utilities .....</b>	<b>31</b>
Water System – District of Mackenzie	31
Water System – Village of McBride	31

Water System – Village of Valemount	31
Water System – City of Prince George	32
Waste Water System – District of Mackenzie	32
Waste Water System – Village of McBride	33
Waste Water System – City of Prince George	33
Waste Water System – Valemount	33
Landfill and Waste Management	34
Licensed Hazardous Materials Disposal	35
Electric Power	35
Natural Gas	38
Telecommunications	39
<b>8. Business Support Services .....</b>	<b>40</b>
<b>9. Government .....</b>	<b>41</b>
Regional District	41
Municipal Government	41
Provincial	42
Provincial Government Representation	42
Federal Government Representation	43
<b>10. Housing .....</b>	<b>44</b>
Housing Characteristics	44
Average Housing Values	44
<b>11. Taxation rates .....</b>	<b>45</b>
Corporate Income Tax	45
Personal Income Tax	45
Sales / Use Tax	45
Sales Tax Rate by Utility	46
Property Tax	47
<b>12. International Resources .....</b>	<b>49</b>
Investment and Business Support Offices	49
Financial Institutions	51
Employment Assistance	51
<b>13. Quality of Life .....</b>	<b>52</b>
Climate	52
Culture	55
Health	60

# 1. DEMOGRAPHICS

## POPULATION

### REGIONAL DISTRICT OF FRASER-FORT GEORGE

Population By Age Group	Population (2001)	Population (2006)	Population (2011)	Distribution % (2011)
0-14	20,510	17,755	16,245	16.7%
15-24	14,285	13,530	12,765	12.9%
25-44	30,095	25,885	29,820	30.5%
45-64	23,390	26,455	27,945	29.2%
65+	7,025	8,650	10,775	10.7%
<b>Total:</b>	<b>95,315</b>	<b>92,265</b>	<b>91,880</b>	<b>100.0%</b>
<b>Median Age:</b>	<b>34.6</b>	<b>37.5</b>	<b>39.5</b>	

Data Source: Statistics Canada – Data Source: Census Community Profile – <http://www12.statcan.gc.ca/census-recensement/index-eng.cfm?HPA>

### NORTHERN BC

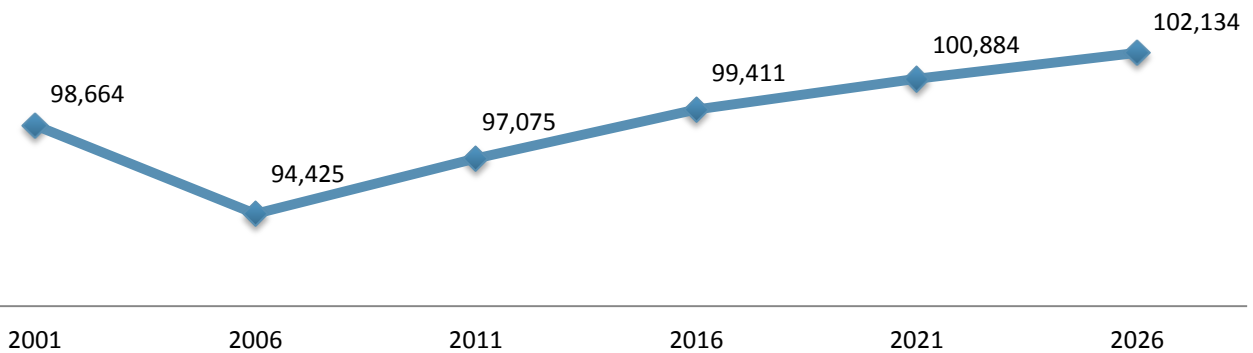
Population By Age Group	Population (2001)	Population (2006)	Population (2011)	Distribution % (2011)
0-14	76,345	65,835	61,225	18.6%
15-24	49,160	46,175	43,750	13.3%
25-44	103,735	87,855	82,280	24.9%
45-64	83,765	95,340	100,935	30.6%
65+	29,225	34,905	41,790	12.7%
<b>Total:</b>	<b>361,968</b>	<b>330,041</b>	<b>329,959</b>	<b>100.0%</b>
<b>Median Age:</b>	<b>35.0</b>	<b>39.5</b>	<b>42.2</b>	

Data Source: 2001, 2006 and 2011 Census Community Profiles – <http://www12.statcan.gc.ca/census-recensement/index-eng.cfm?HPA>

“Northern BC” includes: Regional District of Bulkely Nechako, Cariboo Regional District, Central Coast Regional District, Fraser-Fort George Regional District, Kitimat-Stikine Regional District, Northern Rockies Regional Municipality, Peace River Regional District, Skeena-Queen Charlotte Regional District, Squamish-Lillooet Regional District Electoral Areas A and B, Stikine Region, and Thompson-Nicola Regional District Electoral Areas E and I.



## POPULATION PROJECTION – REGIONAL DISTRICT OF FRASER-FORT GEORGE



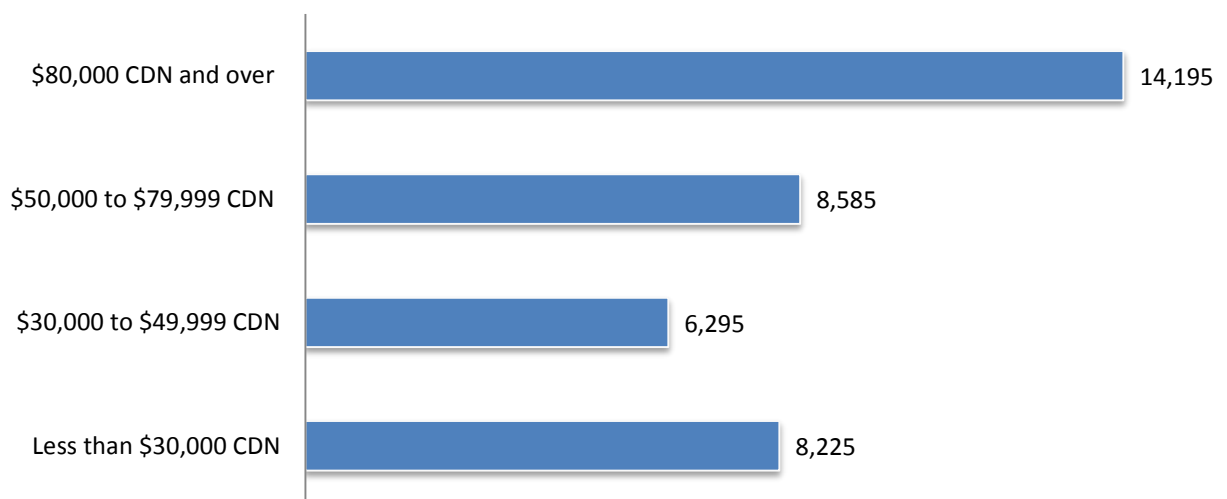
## HOUSEHOLD INCOME

Household Income	2000	2005	2010
Number of Households	35,960	36,455	37,305
Median Income – Private Households	\$52,648	\$61,011	\$63,854
Median After-tax Income – Private Households	n/a	\$52,622	\$56,861

Data Source: National House Survey – <http://www12.statcan.gc.ca/nhs-enm/index-eng.cfm>

Data Source: 2001 and Census Community Profiles – <http://www12.statcan.gc.ca/census-recensement/index-eng.cfm?HPA>

## HOUSEHOLD TOTAL INCOME 2011 – DISTRIBUTION



Data Source: Census Community Profile – <http://www12.statcan.gc.ca/nhs-enm/2011/dp-pd/prof/details/page.cfm?Lang=E&Geo1=CD&Code1=5953&Data=Count&SearchText=fraser%20fort%20george&SearchType=Begins&SearchPR=01&A1=All&B1=All&Custom=&TABID=1>

## WORKFORCE EDUCATION ATTAINMENT

Level of Education	Number Attained	%
High School Diploma Only	22,575	32%
College/University Certificate/Diploma	13,110	18%
Less than High School Diploma	16,035	22%
Apprenticeship/Trades Certificate/Diploma	10,775	15%
University Bachelors Degree	6,290	9%
University Graduate Degree/Certificate	2,330	3%
University Medical/Dentistry/Optometry Degree	545	1%

Data Source: StatsCan – 2011 Census – “Education”

## LANGUAGE KNOWLEDGE

Languages Spoken	Citizens
English	80,835
French	1,445
German	1,495
Punjabi	1,355
Chinese	565
Tagalog (Filipino)	390
Italian	355
Dutch	335
Ukrainian	265
Portuguese	285
Croatian	205
Polish	180
Finnish	130
Hungarian	115
Korean	110
Russian	95
Cree	85

Data Source: StatsCan – 2011 Census – “Mother Tongue”



## 2. LABOUR FORCE

### EMPLOYMENT BY INDUSTRY

#### REGIONAL DISTRICT

Sector (Industry)	Number	Percent
Agriculture, Forestry, Fishing & Hunting	2,505	5.2%
Mining, Quarrying & Oil and Gas	725	1.5%
Construction	4,015	8%
Manufacturing	4,385	8.7%
Transportation & Warehousing	3,425	7%
Utilities	315	1%
Wholesale Trade	1,850	3.7%
Retail Trade	5,925	12.1%
Services	20,580	41.1%
Finance, Insurance & Real Estate	2,140	4.5%
Government	3,510	7.1%
<b>Total</b>	<b>50,250</b>	<b>100.0%</b>

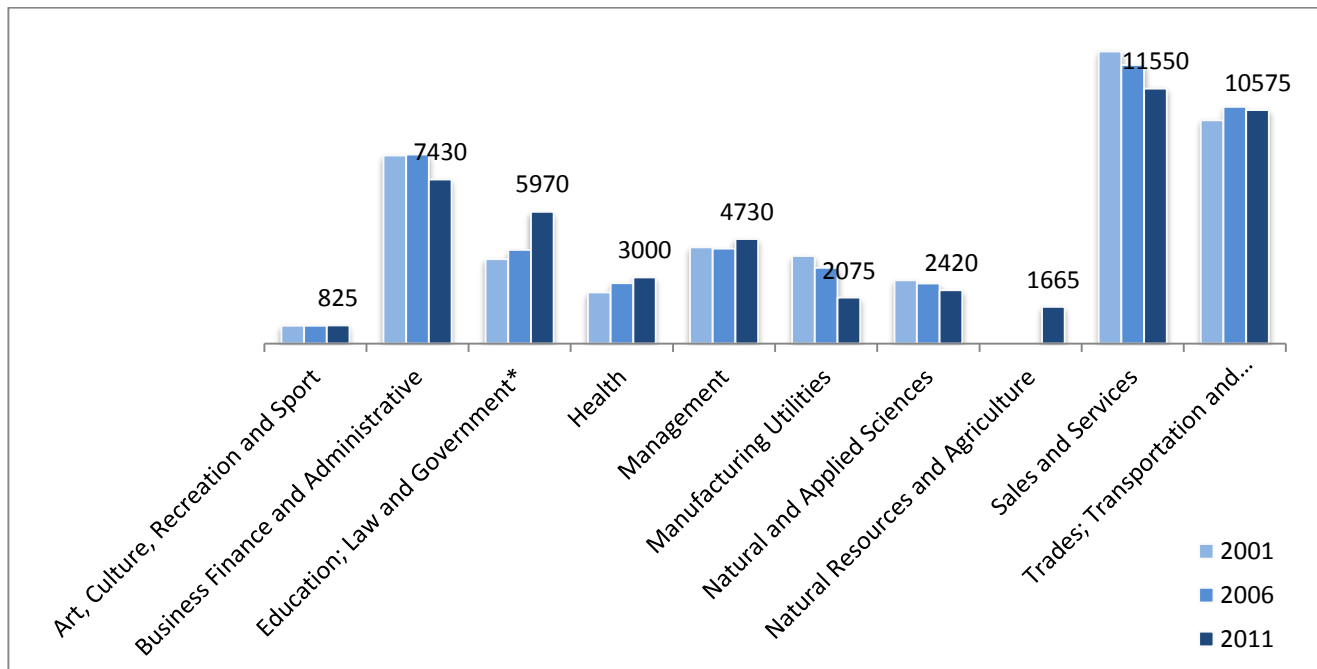
#### NORTHERN BC

Sector (Industry)	Number	Percent
Agriculture, Forestry, Fishing & Hunting	12,329	7.1%
Mining, Quarrying & Oil and Gas	8,891	5.1%
Construction	14,409	8.3%
Manufacturing	15,394	8.9%
Transportation & Warehousing	10,787	6.2%
Utilities	1,182	0.7%
Wholesale Trade	4,704	2.7%
Retail Trade	19,343	11.2%
Services	64,315	37.1%
Finance, Insurance & Real Estate	6,316	3.6%
Government	12,972	7.5%
<b>Total</b>	<b>173,333</b>	<b>100.0%</b>

Data Source: Statistics Canada – National Household Survey 2011- Houston, Regional District Profile: Bulkley-Nechako, Cariboo, Central Coast, Fraser- Fort George, Kitimat-Stikine, Northern Rockies, Peace River, Skeena-Queen Charlotte, Squamish-Lillooet(Areas A &B), Thompson Nicola (Areas E&I) and Stikine  
<http://www12.statcan.gc.ca/nhs-enm/2011/dp-pd/index-eng.cfm>



## EMPLOYMENT BY OCCUPATION



## TOP EMPLOYERS

Company	Product/Service	Ownership	Website
Northern Health Authority	Healthcare	Public	<a href="http://www.northernhealth.ca">www.northernhealth.ca</a>
School District No. 57	Education	Public	<a href="http://www.sd57.bc.ca">www.sd57.bc.ca</a>
Government of BC	Government	Public	<a href="http://www.gov.bc.ca">www.gov.bc.ca</a>
University of Northern BC	Education	Public	<a href="http://www.unbc.ca">www.unbc.ca</a>
City of Prince George	Government	Public	<a href="http://www.princegeorge.ca">www.princegeorge.ca</a>
College of New Caledonia	Education	Public	<a href="http://www.cnc.bc.ca">www.cnc.bc.ca</a>
Canfor Pulp	Pulp & Paper	Private	<a href="http://www.canforpulp.com">www.canforpulp.com</a>
Canfor Wood Products	Forestry	Private	<a href="http://www.canfor.com">www.canfor.com</a>
Lakeland Mills	Lumber	Private	
CN Rail	Transportation	Private	<a href="http://www.cn.ca">www.cn.ca</a>
Telus	Communications	Private	<a href="http://www.telus.ca">www.telus.ca</a>
Save-on-Foods	Grocery	Private	<a href="http://www.saveonfoods.com">www.saveonfoods.com</a>
Costco	Retail	Private	<a href="http://www.costco.com">www.costco.com</a>
Walmart	Retail	Private	<a href="http://www.walmart.com">www.walmart.com</a>

Data Source: Northern Development Research – [www.northerndevelopment.bc.ca](http://www.northerndevelopment.bc.ca)

## AVERAGE INCOME BY OCCUPATION – NORTHERN BC

Occupation	Average wage (\$/Hour)(\$CND)	Effective Date
Administrative Clerks	20.76	2013
Bookkeepers	20.09	2013
Business Development Officers, Marketing Researchers and Consultants	27.69	2013
Carpenters	24.33	2013
Civil Engineers	34.00	2013
Commercial Drivers	36.06	2012
Computer Engineers	29.86	2013
Crane Operators	27.93	2013
Drafting Technicians	23.75	2013
Electrical Engineers	37.99	2013
Forestry Technicians	24.35	2013
Geological Engineers	34.60	2013
Heavy Equipment Operators	27.25	2013
Industrial and Manufacturing Engineers	28.08	2012
Industrial Electricians	33.39	2013
Labourers in Wood, Pulp and Paper Processing	24.96	2013
Labourers, Processing Manufacturing and Utilities	15.02	2013
Logging Machinery Operators	27.44	2013
Machinists	25.95	2012
Mechanical Engineers	35.00	2012
Mine Labourers	21.42	2013
Mining Engineers	34.23	2012
Petroleum Engineers	33.10	2013
Primary Production Managers	42.74	2013
Purchasing Managers	31.87	2012
Sales Representatives	20.76	2013
Senior Managers - Goods Production, Utilities, Transportation and Construction	43.27	2013
Shippers and Receivers	15.00	2013
Steamfitters	32.87	2013
Trades Helpers and Labourers	19.59	2013
Truck Drivers	24.96	2013

- For a complete list of Wages and Salaries in Northern BC visit the link below  
<http://www.workinginCanada.gc.ca/home-eng.do>

## LABOUR FORCE

	2001	2006	2011
<b>Total Population 15 and over</b>	74,810	73,900	74,260
<b>In Labour Force</b>	57,455	53,545	51,355
<b>Employed</b>	47,870	49,390	46,195
<b>Unemployed</b>	9,585	4,155	5,160

Data Source: 2001 and 2006 Census Community Profiles – <http://www12.statcan.gc.ca/census-recensement/index-eng.cfm?HPA>  
2011 National House Survey: <http://www12.statcan.gc.ca/nhs-enm/index-eng.cfm>

## EMPLOYMENT RATE

	2001	2006	2011
<b>Unemployment Rate</b>	11.1%	7.8%	10.0%
<b>Labour Participation</b>	72.4%	72.5%	69.2%

Data Source: 2001 and 2006 Census Community Profiles – <http://www12.statcan.gc.ca/census-recensement/index-eng.cfm?HPA>  
2011 National House Survey: <http://www12.statcan.gc.ca/nhs-enm/index-eng.cfm>

## LABOUR PARTICIPATION RATE

Labour Participation Rate	2001	2006	2011
<b>Male</b>	78.5%	77.6%	73.1%
<b>Female</b>	66.3%	67.3%	65.2%

Data Source: 2001 and 2006 Census Community Profiles – <http://www12.statcan.gc.ca/census-recensement/index-eng.cfm?HPA>  
2011 National House Survey: <http://www12.statcan.gc.ca/nhs-enm/index-eng.cfm>



### 3. PAYROLL COSTS

#### WORKERS COMPENSATION – 2014

		Notes
<b>Average Cost of All Manufacturing Per \$100 Payroll</b>	\$1.54 CDN	Rates set by employer's business activity. Applies up to maximum gross earnings of \$73,700(CDN) per year.
<b>Average Rate for Office Workers Per \$100 Payroll</b>	\$0.30 CDN	There is no separate rating for office occupations in B.C. - the applicable industry rating applies to all workers. Rates for Business Services range from \$0.09-\$0.30 per \$100 of payroll. Average of \$0.30(CDN).
<b>Maximum Weekly Benefit (Net)</b>	\$974.21 CDN	Maximum per employee set at 90% of average net earnings (after deductions for income taxes, Canada Pension Plan & Employment Insurance), up to maximum wage of \$73,700 per year(CDN).

#### EMPLOYMENT INSURANCE – 2014

		Notes
<b>Taxable Base</b>		Based on gross payroll up to a gross per worker salary of \$45,900 per year(CDN).
<b>Percentage Rate (Employer Premium)</b>		
▪ <b>Employee Rate</b>	1.83%	Maximum annual contribution per worker is \$839.97(CDN).
▪ <b>Employer Rate</b>	2.56%	Maximum annual contribution per worker is \$1,176.00(CDN).
▪ <b>Maximum Weekly Benefits</b>	\$485.00 CDN	



## SOCIAL INSURANCE (CANADA PENSION PLAN) – 2014

		Notes
<b>Taxable Base</b>	Gross Payroll \$3,500 CDN	Based on annual gross salary up to \$50,100, basic exemption of \$3,500. Both employers and employees are required to contribute to the Canada Pension Plan.
<b>Employee/Employer Contribution</b>	4.95%	Employer premium equal to employee premium
<b>Maximum Annual Employer Contribution Per Employee</b>	\$2306.70 CDN	Employer contribution matches employee contribution.
<b>Rate</b>	4.95%	
<b>Maximum Annual Self Employed Contribution</b>	\$4,613.40 CDN	

Data Source: TaxTips.Ca – <http://www.taxtips.ca/cppandei.htm>

Data Source: WorkSafeBC – [www.worksafebc.com](http://www.worksafebc.com)



## 4. HIGHER EDUCATION

### FOUR YEAR INSTITUTIONS

<b>Institution</b>	<b>University of Northern British Columbia</b>
<b>Campus/Address</b>	Prince George Main Campus 3333 University Way, Prince George, BC V2N 4Z9 Tel: 250-960-5555
<b>Other Campuses</b>	Terrace, Fort St. John, Quesnel, Prince Rupert
<b>Website</b>	<a href="http://www.unbc.ca">www.unbc.ca</a>
<b>Driving Distance from Community</b>	Located in Community
<b>Enrolment (2012/13) (All Campuses):</b>	4,152

<b>Institution</b>	<b>College of New Caledonia</b>
<b>Campus/Address</b>	3330 22 <sup>nd</sup> Avenue Prince George, BC V2N 1P8 Tel: 250-562-2131
<b>Other Campuses</b>	Valemount, Burns Lake, Fort St. James, Mackenzie, Quesnel, Vanderhoof
<b>Website</b>	<a href="http://www.cnc.bc.ca">www.cnc.bc.ca</a>
<b>Driving Distance from Community</b>	Located in Community
<b>Enrolment (2012/13) (All Campuses):</b>	8,930

Data Source: Northern Development Research – [www.northerndevelopment.bc.ca](http://www.northerndevelopment.bc.ca)

### TRAINING SERVICES

<b>Institution</b>	<b>Category</b>	<b>Telephone Number</b>	<b>Address</b>
<b>John A. Brink &amp; Technology Centre</b>	Trades	250-561-5804	1727 W. Central Avenue Prince George, BC V2N 1P6
<b>Valemount Learning Centre</b>	Employment Assistance	250-566-4601	99 Gorse Street, Box 789 Valemount, BC V0E 2Z0
<b>ABC Safety &amp; First Aid Training Services</b>	First Aid	250-960-1112	220 – 1990 Ogilvie Street Prince George, BC V2N 1X1
<b>PTP ASEP Training Society</b>	Employment Assistance	250-561-1115	300 – 1460 6 <sup>th</sup> Avenue Prince George, BC V2L 3N2

Data Source: Northern Development Research – [www.northerndevelopment.bc.ca](http://www.northerndevelopment.bc.ca)

## 5. TRANSPORTATION

### MAJOR TRANSPORTION ROUTES

#### PACIFIC GATEWAY

British Columbia's ports in Vancouver, Kitimat, Stewart and Prince Rupert are Asia's closest ports of entry on the west coast of North America, up to 58 hours closer than the ports of Los Angeles and Long Beach.

Canadian ports and airports are seamlessly integrated with road and rail connections to all major U.S. economic centers. British Columbia is the only gateway on the west coast of the Americas served by three transcontinental railways. Today, Canada's Pacific Gateway is an integrated, secure, reliable transportation network that includes world-class airports, seaports, railways, roadways and border crossings, bringing Canada and the North American market to Asia and the world. Canada's Pacific Gateway, through British Columbia's ports in Vancouver, Kitimat, Stewart and Prince Rupert, offers Asian shippers the most direct route between Asia and North America.

Canada's Pacific Gateway is a strong commitment by government and industry partners to make British Columbia's ports the preferred gateway for Asia-Pacific trade, with the most competitive port system and supply chain on the west coast of the Americas. This commitment builds on Canada's longstanding and strong cultural and economic ties with Asia. In the emerging new global economy, Canada's Pacific Gateway is a gateway to the future.

#### RAIL NETWORK



## NORTHERN CORRIDOR

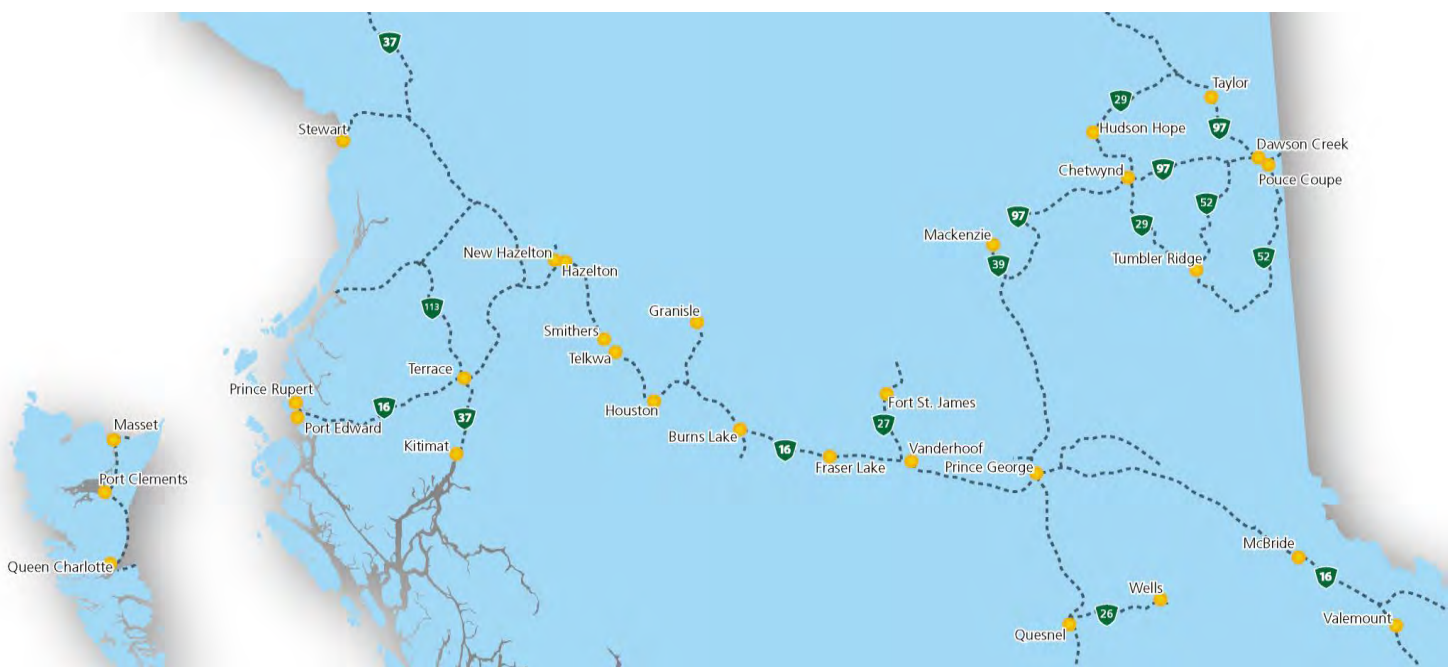
The Northern Corridor spans over half of continental Canada and reaches well into the heartland of North America south of Chicago, USA. It travels through the lowest elevations of the Americas great continental divide, also known as the “Yellow Head Pass,” and forms the straightest, shortest, flattest route for Asian-North American trade. Three Northern British Columbia ports provide efficient access to this corridor; Kitimat, Stewart and Prince Rupert. Each port offers unique advantages and services that meet the needs of the region and international trade.

Trans-Continental Rail, Trans Canada Highway, and direct air service into international Air Hubs are in place. The corridor services business covered by the North American Free Trade Agreement through a variety of break bulk and container services, in ports operated by governments and those run by private port interests.

The Northern Corridor is less impeded by road closures, significant weather patterns and avalanches than the Southern Canadian corridor. It provides “one less day” shipping advantage to or from Asia, compared to all other North American Port locations including Vancouver and all USA pacific Ports.

Existing trade in Kitimat and Prince Rupert ports include aluminum and paper shipped via privately owned break-bulk terminals. It also includes transshipment of petrochemicals through privately owned facilities, barge service and container port services. Growth is expected in energy exports including liquid natural gas, petroleum, and container capacity.

Canadian National Rail (CN Rail) reaches well into the heartland of America, with shipping agreements in place with major US rail carriers. CN Rail has made significant investments in the Northern Corridor rail line including extended sidings, upgrades to signal systems, and increased bridge and tunnel clearances. The corridor is serviced by five international airports and four northern airports, with Prince George offering international services.



# HIGHWAYS IN BRITISH COLUMBIA



## NORTHERN CORRIDOR SPECIFICATIONS

Commercial Vehicle Without Permit	Specifications
Maximum Width	2.59 meters
Maximum Height	4.15 meters
Maximum Vehicle Weights	
Super B	63,500 kgs
Single Axel	9,100 kgs
Tandem Axle (Set)	17,000 kgs
Tridem Axle (Set)	24,000 kgs

Commercial Vehicle With Permit	Specifications
Maximum Width	4.4 meters
Maximum Height	4.72 meters
Maximum Vehicle Weights	
Super B	64,000 kgs
Single Axel	9,100 kgs
Tandem Axle (Set)	23,000 kgs
Tridem Axle (Set)	29,000 kgs

## OVERHEAD CLEARANCE

Yellowhead Highway 16 from BC Border to Prince Rupert	Clearance (meters)
▪ Khyex River Bridge	5.95m
▪ Kitsequcla Overpass	5.7m
▪ Tete Jaune underpass	4.96m
<b>Highway 37 from Hwy 16 North to Yukon Border</b>	
▪ Irving River Bridge #2	5.74m
▪ Devil Creek Bridge	5.74m
<b>Highway 37 from Hwy 16 South to Kitimat</b>	
▪ Williams Creek Bridge	4.97m
▪ Hirsch Creek Bridge	4.72m
▪ Kitimat River Bridge	5.08m
<b>Highway 37A from Hwy 37 To Stewart</b>	
▪ No Clearances	

## PROVINCIAL PERMIT CENTRE

For more information on receiving a commercial vehicle permit please contact Commercial Vehicle Safety and Enforcement at **1-800-559-9688**. The core hours of service are from 5am to 10pm, seven days a week and most statutory holidays. The 1-800 number is available to callers anywhere in Canada or the United States. Permits available through this line include:

- non-resident commercial vehicle permits
- term oversize and overweight permits
- single trip oversize and overweight permits
- motor fuel tax permits
- highway crossing permits
- extra-provincial temporary operating permits

## HIGHWAY DISTANCES (FROM PRINCE GEORGE)

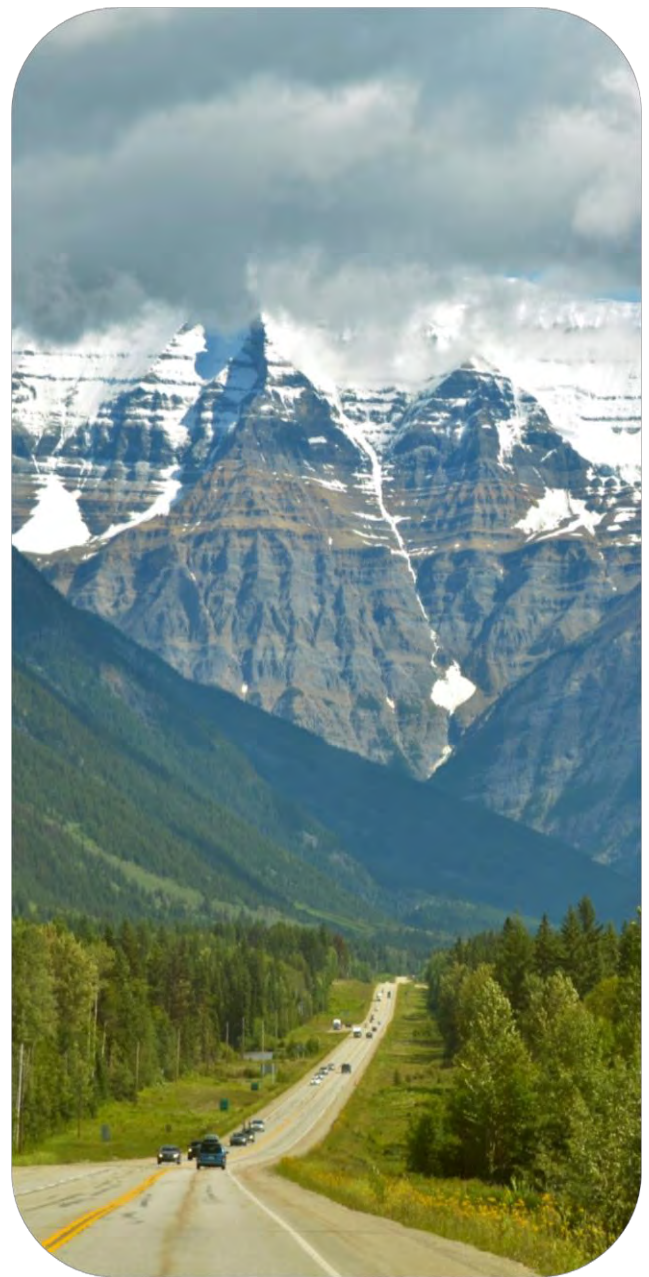
Metro Area	Distance
Prince Rupert	718 km
Prince George	-
Kamloops	527 km
Edmonton	740 km
Vancouver	787 km
Calgary	784 km
Victoria	877 km
Seattle	902 km
Portland	1,181 km

## RAILROADS

CN Rail (Freight)	<a href="http://www.cn.ca">www.cn.ca</a>
Main or Branch Line:	Branch and Main
Shortline or National:	National and Shortline
Distance to Nearest Switching Yard:	Prince George
Capabilities	Cargo-Bulk, Container, Liquid, Multi Commodities

VIA Rail (Passenger)	<a href="http://www.viarail.ca">www.viarail.ca</a>
Main or Branch Line:	Branch and Main
Shortline or National:	National and Shortline
Distance to Nearest Switching Yard:	Prince George
Capabilities	Passenger

Data Source: Northern Development Research – [www.northerndevelopment.bc.ca](http://www.northerndevelopment.bc.ca)



## AIRPORTS

<b>Largest Provincial International Airport</b>	<b>Vancouver (YVR)</b>
<b>Distance to Airport</b>	787 km
<b>Customs Point of Entry</b>	Yes
<b>Foreign Trade Zone</b>	No
<b>Full Instrumentation</b>	Yes
<b>No. of Runways</b>	3
<b>Runway Length</b>	3,030 m; 3,500 m; 2,225 m
<b>Carriers</b>	
▪ <b>Passenger</b>	62 (Including 13 code share)
▪ <b>Cargo</b>	6
▪ <b>Charter</b>	8 (Included in Passenger carriers)
<b>Weekly Non-Stop Flights</b>	4,289 departures



<b>Prince George International Airport (YXS)</b>	<a href="http://www.pgairport.ca">www.pgairport.ca</a>
<b>Hub Status</b>	International
<b>Hours of Operation</b>	24 hrs / 7 days
<b>Approved Capital Expansion</b>	\$3 million soft cargo warehouse construction to be completed for 2013. \$2 million Aviation Jet Fuel depot development to be completed in the fourth quarter of 2012.
<b>Customs Point of Entry</b>	Yes
<b>Foreign Trade Zone</b>	No
<b>Full Instrumentation</b>	Yes
<b>No. of Runways</b>	3
<b>Runway Lengths</b>	3,490 m; 1,714 m; 1,352 m
<b>Carriers</b>	Air Canada Express, Central Mountain Air, WestJet, Northern Thunderbird Air, Guardian Aerospace, Pacific Coastal Airlines
<b>Weekly Non-Stop Flights</b>	161
<b>Flights to Largest Cities Served</b>	Weekly Flights
<ul style="list-style-type: none"> <li>• <b>Greater Vancouver</b></li> </ul>	90
<ul style="list-style-type: none"> <li>• <b>Calgary</b></li> </ul>	7
<ul style="list-style-type: none"> <li>• <b>Kamloops Area</b></li> </ul>	7
<ul style="list-style-type: none"> <li>• <b>Kelowna Area</b></li> </ul>	7
<ul style="list-style-type: none"> <li>• <b>Puerto Vallarta, Mexico</b></li> </ul>	1



---

**Mackenzie Airport**

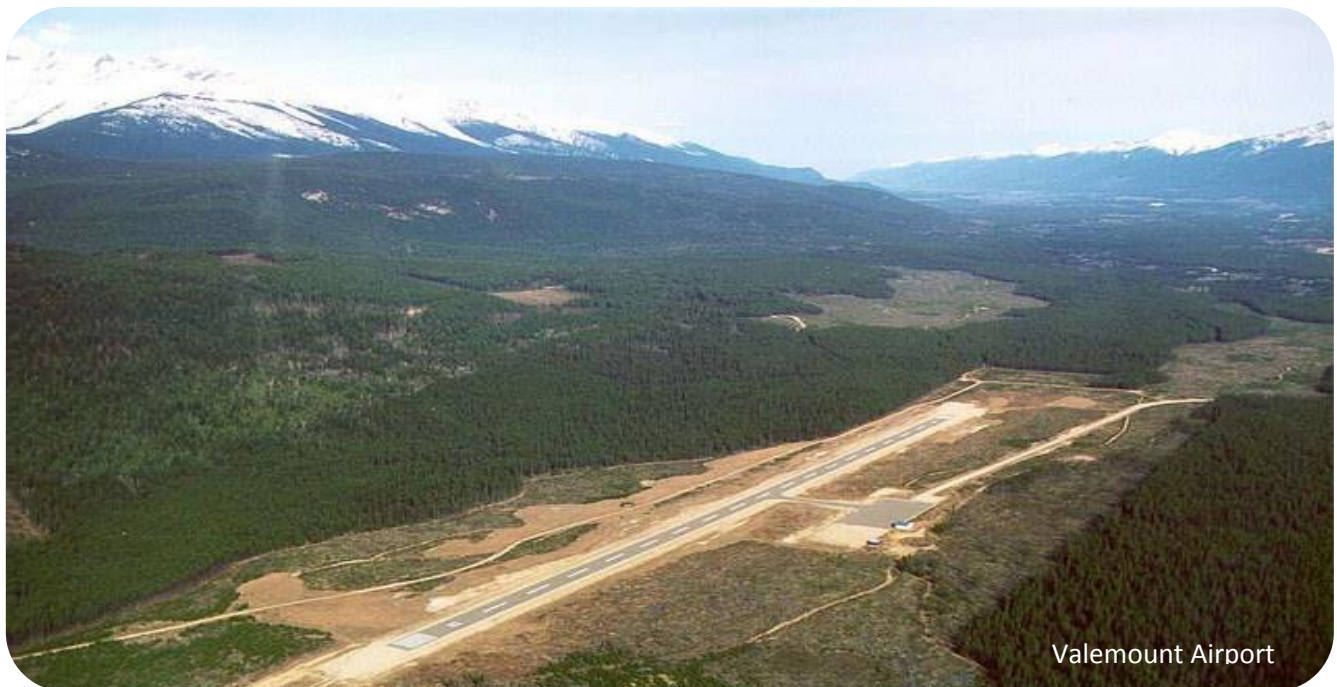
<b>Hub Status</b>	Class C
<b>Hours of Operation</b>	24 hours/7 days
<b>Approved Capital Expansion</b>	No
<b>Customs Point of Entry</b>	No
<b>Foreign Trade Zone</b>	No
<b>Full Instrumentation</b>	No
<b>No. of Runways</b>	1
<b>Runway Length</b>	1,585 m
<b>Carriers</b>	Northern Thunderbird Air, Pacific Western Helicopters, Yellowhead Helicopters

---

**Valemount Airport**

<b>Hub Status</b>	Regional Airport
<b>Distance to Local Airport</b>	9 km from community
<b>Customs</b>	No
<b>Number of Runways</b>	1
<b>Runway Length</b>	1199 m paved runway
<b>Private Aircraft Storage Facilities</b>	Tie Downs
<b>Charter/Cargo</b>	None

---



Valemount Airport

---

**McBride Airport (Charlie Leake Field)**

<b>Hub Status</b>	Regional Airport
<b>Hours of Operation</b>	As needed
<b>Customs</b>	No
<b>Number of Runways</b>	1
<b>Runway Length</b>	823 m paved runway
<b>Passenger</b>	Independent
<b>Charter/Cargo</b>	None



## PORTS

### PORT OF PRINCE RUPERT

<b>Port of Prince Rupert</b>	<a href="http://www.rupertport.com">www.rupertport.com</a>
<b>Distance from Prince George</b>	710 km
<b>Location of Port</b>	Prince Rupert
<b>Terminals</b>	Fairview (Container) Terminal, Ridley Terminals, (coal, wood pellets), Prince Rupert Grain, Northland Cruise Terminal
<b>Type of Port</b>	Ocean
<b>Channel Depth</b>	35-55 meters
<b>Shallow Water Barging Facilities</b>	Yes
<b>Deep Water Barging Facilities</b>	Yes
<b>General Cargo Facilities</b>	Yes
<b>Containerized Facilities</b>	Yes
<b>Refrigerated Container Facilities</b>	Yes
<b>Cruise Ship Facilities</b>	Yes
<b>Storage Facilities</b>	Yes
<b>Highway Serving Port</b>	#16
<b>Railway Serving Port</b>	CN Rail
<b>Types of Services:</b>	Containers, Bulk/break-bulk: Coal, Petroleum Coke, Wood Pellets, Grain, Logs,
<b>Imports</b>	Retail (including electronics, apparel, furniture, auto parts); petroleum products; industrial inputs (tiles, glass)
<b>Exports</b>	Midwest – specialty crops; scrap metal, recycled paper British Columbia – Forest products (lumber, pulp, logs); aluminum, seafood
<b>Shipping Lines</b>	Cosco, Hanjin, Yang Ming, K-Line, Quickload Transloading Services, Shipping Agents, GW Nickerson Co., Northcoast Shipping, Rupert Marine Shipping, Tidals Transport & Trading Ltd.



## PORT OF KITIMAT

<b>Private Port of Kitimat</b>	<a href="http://www.kitimat.ca/EN/main/business/invest-in-kitimat/port-of-kitimat.html">www.kitimat.ca/EN/main/business/invest-in-kitimat/port-of-kitimat.html</a>
<b>Distance from Prince George</b>	840 km
<b>Terminals</b>	Rio Tinto Alcan - Break Bulk Terminal LNG Canada Petrochemical Terminal Kitimat LNG Breakbulk Terminal
<b>Type of Port</b>	Deep Sea
<b>Channel Depth</b>	45- 200 fathoms,18-185 Meters (59-607 Feet)
<b>Turning Basin</b>	1.1 - 2.2 nautical miles
<b>Shallow Water Barging Facilities</b>	Yes
<b>Deep Water Barging Facilities</b>	Yes
<b>General Cargo Facilities</b>	Yes
<b>Containerized Facilities</b>	No
<b>Storage Facilities</b>	Yes
<b>Highway Serving Port</b>	Highway #16 via #37
<b>Railway Serving Port</b>	CN Rail
<b>Types of Services</b>	Bulk/ Break-bulk, Methanol, Ammonia condensate, Pitch, Alumina ,Bauxite condensate
<b>Imports</b>	Pitch, Alumina, Bauxite Condensate, Methanol
<b>Exports</b>	Kraft Paper, Aluminum Sheeting
<b>Shipping Lines</b>	Waterfront Shipping, Gearbulk
<b>Shipping Agents</b>	GW Nickerson Co., TNC Canada
<b>Customs Brokers</b>	GW Nickerson Co., Moore E T S Services
<b>Tug &amp; Barge</b>	SMIT Marine, Seaspace International
<b>Port Accessed by</b>	Highway and Rail



## CUSTOM POINT OF ENTRY

<b>Canadian Border Services Agency</b>	<b>Prince Rupert</b>
<b>Type of Entry Point</b>	Port
<b>Location</b>	368-309 2 <sup>nd</sup> Ave West Prince Rupert, BC Canada V8J 3T1 Tel: 250-627-3003
<b>Canadian Border Services Agency</b>	<b>Prince George International Airport (YXS)</b>
<b>Type of Entry Point</b>	Airport
<b>Location</b>	4141 Airport Road Prince George, BC V2N 4M6 Tel: 1-800-461-9999
<b>Canadian Border Services Agency</b>	<b>Pacific Highway/Peace Arch/Osoyoos/Sumas/Stewart border crossings</b>
<b>Type of Entry Point</b>	Highway
<b>Location</b>	<u>BC-Alaska</u> Pleasant Camp, Haines Highway 3 Fraser, Klondike Highway 2 Stewart, Highway 37A  <u>BC-Washington</u> 13 Crossings  <u>BC-Idaho</u> Creston and Kingsgate

Data Source: Northern Development Research – [www.northerndevelopment.bc.ca](http://www.northerndevelopment.bc.ca)



## PORT SHIPPING DISTANCES

The NW Transportation and Trade Corridor ports (Kitimat and Prince Rupert, Stewart) are between 1 and 1 1/2 day closer to general Asia Pacific markets than the Ports in British Columbia's lower mainland; and the Vancouver Ports. The Southern Ports are closer to the Panama Canal and subsequently, the Atlantic. The following table is in nautical miles. The Time/Speed/Distance Calculations are at 16.1439 Kn/Hr., the average speed The Port of Vancouver uses for calculating their shipping to Yokohama, Hong Kong, Kaohsiung (Taiwan) and Xingang (China). Deep-sea vessels travel at various speeds between 14Kn/Hr and 20Kn/Hr. The 'great circle shipping route' to Asia from North America has well documented ocean currents and weather/wind patterns which allows for accurate estimates.

	Kitimat	Prince Rupert	Stewart	Vancouver	Los Angeles	Yokohama (Japan)	Hong Kong	Kaohsiung Kang(Taiwan)	Xingang (China)
<b>Kitimat</b>	--	121 NM 7.5 Hrs	264 NM 17 Hrs	400 NM 1 Day	1,391 NM 3.5 Days	3,941 NM 10 Days	5,444 NM 14 Days	6,,187 NM 16 Days	6,187 NM 16 Days
<b>Prince Rupert</b>	121 NM 7.5 Hrs	--	123 NM 10 Hrs	477 NM 1.2 Days	1,432NM 3.6 Days	3,810 NM 9.8 Days	5,323 NM 13.7 Days	6,110 NM 15.7 Days	6,110NM 15.7 Days
<b>Stewart</b>	264 NM 17 Hrs	123 NM 10 Hrs	--	573 NM 1.5 Days	1,529 NM 4 Days	3,896 NM 10.3 Days	5,406 NM 14.1 Days	5,155 NM 13.4 Days	4,749 NM 12.5 Days
<b>Vancouver</b>	400 NM 1 Day	477 NM 1.2 Days	573 NM 1.5 Days	--	991 NM 2.5 Days	4,262 NM 11 Days	5,763 NM 15 Days	6,587 NM 17 Days	7,578 NM 20 Days
<b>Los Angeles</b>	1,391 NM 3.5 Days	1,432 NM 3.6 Days	1,529 NM 4 Days	991 NM 2.5 Days	--	4,839 NM 12.5 Days	6,380 NM 18 Days	7,578 NM 20 Days	8,959 NM 23 Days
<b>Yokohama</b>	3,941 NM 10 Days	3,810 NM 9.8 Days	3,896 NM 10.3 Days	4,262 NM 11 Days	4,839 NM 12.5 Days	--	1,585 NM 4 Days	1,335 NM 3.4 Days	1,335 NM 3.4 Days
<b>Hong Kong</b>	5,444 NM 14 Days	5,323 NM 13.7 Days	5,406 NM 14.1 Days	5,763 NM 15 Days	6,380 NM 18 Days	1,585 NM 4 Days	--	290 NM 18 Hrs	290 NM 18 Hrs
<b>Kaohsiung Kang</b>	6,187 NM 16 Days	6,587 NM 17 Days	5,155 NM 13.4 Days	6,587 NM 17 Days	7,578 NM 20 Days	1,335 NM 3.4 Days	290 NM 18 Hrs	--	227 NM 14 Hrs
<b>Xingang</b>	6,187 NM 16 Days	6,587 NM 17 Days	4,749 NM 12.5 Days	7,578 NM 20 Days	8,959 NM 23 Days	1,335 NM 3.4 Days	290 NM 18 Hrs	227 NM 14 Hrs	--

Source: United States Government. "Distances Between Ports" Prepared and published by the National Imagery and Mapping Agency, Bethesda, Maryland. Ninth Edition 1997. \*Time/Speed/Distance Calculations at 16.1439 Kn/Hr., the average speed Vancouver Port lists to reach Yokohama, Hong Kong, Kaohsiung (Taiwan) and Xingang (China)

## 6. INDUSTRIAL & COMMERCIAL LAND USE

### LAND ZONED AND DESIGNATED IN OFFICIAL COMMUNITY PLAN

Community	Developed Industrial Land	Vacant Industrial Land	Developed Commercial Land	Vacant Commercial Land	Developed Mixed Use	Vacant Mixed Use
<b>Mackenzie</b>	Contact the District of Mackenzie's Administrator at 250-997-3221					
<b>McBride</b>	22 hectares	100 hectares	37 hectares	25.3 hectares	-	-
<b>Prince George</b>	1,723 hectares	999 hectares	201 hectares	55 hectares	258 hectares	29 hectares
<b>Valemount</b>	10 hectares	230 hectares	-	-	-	-

### LOCAL PERMIT APPROVALS

Community	Building Permit	Business License	Development Permit	Building Occupancy Permit	Official Community Plan	Re-Zoning Application	Subdivision Application
<b>Mackenzie</b>	4 weeks	2 weeks	4 weeks	2 weeks	4 months	8 weeks	Varies
<b>McBride</b>	2 days	2 weeks	4 weeks	2 weeks	4 months	8 weeks	Varies
<b>Prince George</b>	2 weeks	1 week	4 weeks	2 weeks	4 months	-	Varies
<b>Valemount</b>	2 weeks	2 weeks	4 weeks	2 weeks	4 months	8 weeks	Varies
<b>Regional District of Fraser-Fort George</b>	2 days	N/A	2 weeks	2 days	4 months	4 months	Varies

Data Source: Northern Development Research – [www.northerndevelopment.bc.ca](http://www.northerndevelopment.bc.ca)



## ACQUISITION OF CROWN LAND

- Crown land is land that is owned by the Province of British Columbia. The Province is the steward of the land and can lease, license and sell crown land for a variety of purposes including residential, commercial, industrial, agricultural, tourism and recreational purposes.

Government Ministry	Contact	Notes
Ministry of Forests, Lands and Natural Resource Operations: Land Tenures Branch	p: 1-877-855-3222 e: <a href="mailto:FrontCounterBC@gov.bc.ca">FrontCounterBC@gov.bc.ca</a>	Administers and allocates Crown land parcels for lease, license and sale.
Ministry of Transportation	Telephone: (250) 387-3198	Administers land sales related to public airports and port authorities.

- To view properties that the Federal Government of Canada has for sale, please visit: <http://id-reo.tpsgc-pwgsc.gc.ca/public/>



## 7. UTILITIES

---

### WATER SYSTEM – DISTRICT OF MACKENZIE

The District of Mackenzie’s water is municipally supplied and comes from three wells adjacent to Morfee Lake in town and a fourth well in the rural subdivision. The water is of such high quality that it does not require any treatment.

The District of Mackenzie’s Public Works is responsible for the operation of the water supply system. For further information on the District of Mackenzie’s water system contact the Public Works Department at 250-997-3221.

### WATER PRODUCTION

---

#### District of Mackenzie

<b>Rated Capacity</b>	109.8 (mld)
<b>Average Daily Demand</b>	24.6 (mld)
<b>Peak Demand</b>	6.4 (mld)
<b>Residential Cost (flat rate)</b>	\$217.67
<b>Industrial Cost / 3,785 Liters</b>	\$2.78/3,785 liters over 49,210 liters
<b>Water Connection Fee: Industrial</b>	0

---

*Data Source: District of of Mackenzie – [www.district.mackenzie.bc.ca](http://www.district.mackenzie.bc.ca)*

### WATER SYSTEM – VILLAGE OF MCBRIDE

Water within the Village of McBride is sourced primarily from a surface supply source from Dominion Creek with the Water Reservoir Located near Lucille Mountain. The water is treated with a UV Treatment and Chlorine. Major upgrades were completed in 2010 improving the overall reliability of the system and water quality.

The Village of McBride Public Works Department is responsible for the operation and maintenance of the System. For more information contact the village office at 250- 569-2229.

### WATER SYSTEM – VILLAGE OF VALEMOUNT

Average use 400m<sup>3</sup>/day, total system capacity: 1000m<sup>3</sup>/day. The Village of Valemount is responsible for the distribution of Valemount’s water supply to areas where lines currently exist. For more information, please contact the Village of Valemount municipal office at 250-566-4435.

## WATER PRODUCTION

### Village of Valemount

<b>Water System Connection Fee</b>	\$750.00 (up to 19 mm connection)
<b>Water System Connection Fee</b>	\$1,000.00 (over 19mm and up to 38 mm connection)

Data Source: Village of Valemount – [www.valemount.ca](http://www.valemount.ca)

## WATER SYSTEM – CITY OF PRINCE GEORGE

The City of Prince George’s drinking water comes from 6 municipal wells that draw 17.8 billion liters of water each year from underground aquifers. By utilizing underground aquifers, residents are protected against bacteria and other pollutants often found in surface sources such as lakes or rivers. Raw water is chlorinated according to guidelines set out by the Northern Health Authority. The amount of chlorine used is monitored daily to maintain system-wide balance and to ensure the highest degree of protection for all residents. Treated water is pumped to and stored in 14 service reservoirs strategically located throughout the City.

## WATER PRODUCTION

### City of Prince George

<b>Residential Cost (flat rate)</b>	\$511.28/year
<b>Connection Fee</b>	Contact City of Prince George municipal office

Data Source: City of Prince George – [www.princegeorge.ca](http://www.princegeorge.ca)

## WASTE WATER SYSTEM – DISTRICT OF MACKENZIE

The District of Mackenzie’s sewer system consists of a 757,000 liter mixed aeration tank, two settling ponds and an engineered wetland for final polishing.

The District of Mackenzie’s Public Works is responsible for the operation of the sewer system. For further information on the District of Mackenzie’s sewer system contact the Public Works Department at 250-997-3221.

## SEWAGE SERVICE

### District of Mackenzie

<b>Rated Capacity</b>	2.5 (mld)
<b>Average Daily Demand</b>	2,000 m <sup>3</sup> /day
<b>Peak Demand</b>	3,000 m <sup>3</sup> /day
<b>Cost per 3,785 Liters- Industrial</b>	\$1.91/3,785 liters over 49,210 liters
<b>Sewer Connection Fee for Industrial Users</b>	0

Data Source: District of Mackenzie – [www.district.mackenzie.bc.ca](http://www.district.mackenzie.bc.ca)

## WASTE WATER SYSTEM – VILLAGE OF MCBRIDE

The Village’s four-cell sewer system is one of the first environmentally friendly, non-chemical system in North America. The site operates on biological purification, relying on a variety of plant species within the cells, and filtering into adjacent wetlands and tree lots to completely purify the waste.

## WASTE WATER SYSTEM – CITY OF PRINCE GEORGE

The City of Prince George handles the removal of residential and normal commercial waste within the city limits and uses an automated big system for which the resident is charged according to the size of bin. The regional landfill is managed by the Regional District of Fraser-Fort George. Waste management infrastructure and policies for business are dependent on the characteristics of the operation. Please contact the Regional District Fraser-Fort George at 1-800-667-1959 for more information.

## WASTE WATER SYSTEM – VALEMOUNT

The Village of Valemount handles the removal of residential and normal commercial waste within the city limits. For more information, please contact the Village of Valemount’s municipal office at 250-566-4435.

## SEWAGE SERVICE

---

Village of Valemount	
Rated Capacity	-
Average Daily Demand	730 cubic metre/day
Peak Demand	1,000 cubic metre/day
Cost per 3,785 Liters - Industrial	-
Sewer Connection fee for Industrial Users	\$750

---

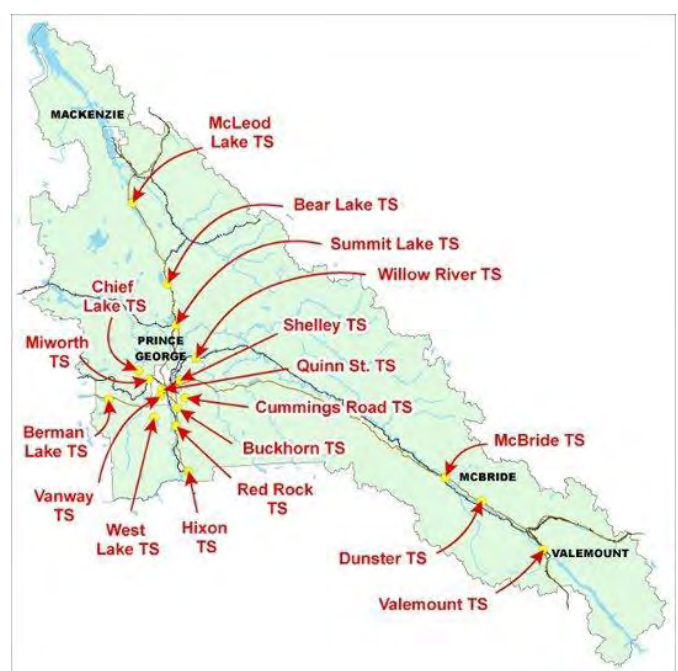
Data Source: Village of Valemount – [www.valemount.ca](http://www.valemount.ca)



## LANDFILL AND WASTE MANAGEMENT

Facility Name	Type of Facility	Location	Operational Years Remaining
Bear Lake Transfer Station	Transfer Station	80 km from Prince George	N/A
Buckhorn Transfer Station	Transfer Station	15 km from Prince George	N/A
Chief Lake Transfer Station	Transfer Station	10 km from Prince George	N/A
Cummings Road Transfer Station	Transfer Station	12 km from Prince George	N/A
Foothills Boulevard Regional Landfill	Landfill	Prince George	Beyond 2027
Hixon Regional Transfer Station	Transfer Station	60 km from Prince George	N/A
Legrand Waste Landfill	Select Waste	20 km from McBride	20 years
Mackenzie Regional Landfill	Landfill	Mackenzie	N/A
McLeod Lake Transfer Station	Transfer Station	55 km from Mackenzie	N/A
Miworth Transfer Station	Transfer Station	5 km from Prince George	N/A
Quinn Street Transfer Station	Transfer Station	Prince George	N/A
Shelley Transfer Station	Transfer Station	12 km from Prince George	N/A
Summit Lake Transfer Station	Transfer Station	50 km from Prince George	N/A
West Lake Transfer Station	Transfer Station	20 km from Prince George	N/A
Willow River Transfer Station	Transfer Station	32 km from Prince George	N/A

Data Source: Northern Development Research – [www.northerndevelopment.bc.ca](http://www.northerndevelopment.bc.ca)



## LICENSED HAZARDOUS MATERIALS DISPOSAL

<b>Number Serving the Region</b>	<b>7</b>	(Please contact individual municipalities for more information)
----------------------------------	----------	---

## ELECTRIC POWER

<b>Provider: BC Hydro</b>	<a href="http://www.bchydro.com">www.bchydro.com</a>
<b>Enquiries to hook up new property</b>	1-877-520-1355
<b>Enquiries about existing properties already hooked up</b>	1-800-224-9376
<b>Net Importer/Exporter of Power:</b>	Net Exporter – BC Hydro generates between 43,000 and 54,000 GWh of electricity annually.
<b>% of Reserve Margin Including Generation &amp; Net Purchases</b>	8% as per WSCC guidelines plus an additional 8% surplus
<b>Average Electrical Service Availability Index</b>	
▪ <b>Most Recent Year</b>	99.940
▪ <b>Last 5 Years</b>	99.9314
<b>Name of Power Pool Membership</b>	Formal membership in WSCC, WSPP, Power Pool of Alberta (PPA), MAPP. Also active in SPP and CalPX
<b>Source Electric Power Deregulated</b>	Wholesale competition allowed
<b>Residential Customers</b>	6.80 cents per kWh for the first 1,350 kWh they use over a two-month billing period. Above that amount, customers pay 10.19 cents per kWh for the balance of the electricity used during the billing period.
<b>Business Customers</b>	Average Cost Per kWh
<b>Small General Service Rate</b>	<i>Annual peak demand less than 35kW</i>
▪ <b>Basic Charge</b>	19.25 cents per day
▪ <b>All kWh</b>	\$0.0915 per kWh
▪ <b>Minimum Charge</b>	The Basic Charge
▪ <b>Rate Rider</b>	5% Rate Rider applied to all charges, before taxes and levies.
<b>Medium General Service Conservation Rate</b>	<i>Annual peak demand between 85 and 150 kW</i>
▪ <b>Basic Charge</b>	19.25 cents per day
▪ <b>Demand Charge</b>	\$0.00 per kW for first 35 kW \$4.69 per kW for next 115 kW \$9.00 per kW for remaining kW

<ul style="list-style-type: none"> <li>▪ <b>Energy Charge</b></li> </ul>	<p>Part 1: First 14,800 kWh \$0.0897 per kWh All additional kWh \$0.0490 per kWh up to baseline</p> <p>Part 2: \$0.0942 per kWh for usage up to 20% above baseline \$0.0942 per kWh for savings down to 20% below baseline (credit)</p> <p>Usage or savings beyond 20% of baseline are based on Part 1 prices</p>
<ul style="list-style-type: none"> <li>▪ <b>Discounts</b></li> </ul>	<p>1.5% on entire bill if customer's electricity is metered at primary potential</p> <p>\$0.25 per kW if customer supplies transformation from a primary to a secondary potential.</p> <p>If a customer is entitled to both discounts the 1.5% discount is applied first.</p>
<ul style="list-style-type: none"> <li>▪ <b>Minimum Charge</b></li> </ul>	<p>50% of the highest maximum demand charge billed in any month within an on-peak period (1 November to 31 March inclusive) during the preceding 11 months.</p>
<ul style="list-style-type: none"> <li>▪ <b>Rate Rider</b></li> </ul>	<p>5% Rate Rider applied to all charges, before taxes and levies.</p>
<p><b>Medium General Service Interim Rate</b></p>	<p><i>Annual peak demand between 35 and 150 kW. MGS accounts are moving from the MGS Interim Rate to the new MGS Conservation Rate which better encourages conservation.</i></p>
<ul style="list-style-type: none"> <li>▪ <b>Basic Charge</b></li> </ul>	<p>\$0.1925 per day</p>
<ul style="list-style-type: none"> <li>▪ <b>Demand Charge</b></li> </ul>	<p>\$0.00 per kW for first 35 kW \$4.69 per kW for next 115 kW \$9.00 per kW for remaining kW</p>
<ul style="list-style-type: none"> <li>▪ <b>Energy Charge</b></li> </ul>	<p>\$0.0897 per kWh for last 14,800 kWh \$0.0490 per kWh for remaining kWh</p>
<ul style="list-style-type: none"> <li>▪ <b>Discounts</b></li> </ul>	<p>1.5% on entire bill if customer's electricity is metered at primary potential</p> <p>\$0.25 per kW if customer supplies transformation from a primary to a secondary potential</p> <p>If a customer is entitled to both discounts the 1/5% discount is applied first</p>
<ul style="list-style-type: none"> <li>▪ <b>Monthly Minimum Charge</b></li> </ul>	<p>50% of the highest maximum demand charge billed in any month within an on-peak period (1 November to 31 March inclusive) during the preceding 11 months</p>
<ul style="list-style-type: none"> <li>▪ <b>Minimum Energy Charge</b></li> </ul>	<p>\$0.0281 per kWh applies when the Energy Charge (Part 1 and 2) divided by the total kWh is less than \$0.0281 per kWh</p>
<ul style="list-style-type: none"> <li>▪ <b>Rate Rider</b></li> </ul>	<p>5% Rate Rider applied to all charges, before taxes and levies</p>
<p><b>Large General Service Conservation Rate</b></p>	<p><i>Annual peak demands equal to or greater than 150 kW or total annual energy usage of at least 550,000kWh.</i></p>
<ul style="list-style-type: none"> <li>▪ <b>Basic Charge</b></li> </ul>	<p>\$0.1925 per day</p>

<ul style="list-style-type: none"> <li>▪ <b>Demand Charge</b></li> </ul>	<p>\$0.00 per kW for first 35 kW  \$4.69 per kW for next 115 kW  \$9.00 per kW for remaining kW</p>
<ul style="list-style-type: none"> <li>▪ <b>Energy Charge</b></li> </ul>	<p>Part 1:  \$0.0937 per kWh for first 14,800 kWh  \$0.0451 per kWh for remaining kWh up to baseline</p> <p>Part 2:  \$0.0942 per kWh for usage up to 20% above baseline  \$0.0942 per kWh for savings down to 20% below baseline (credit)</p> <p>Usage or savings beyond 20% of baseline are based on Part 1 prices</p>
<ul style="list-style-type: none"> <li>▪ <b>Discounts</b></li> </ul>	<p>1.5% on entire bill if customer's electricity is metered at primary potential</p> <p>\$0.25 per kW if customer supplies transformation from a primary to a secondary potential</p> <p>If a customer is entitled to both discounts the 1.5% discount is applied first</p>
<ul style="list-style-type: none"> <li>▪ <b>Monthly Minimum Charge</b></li> </ul>	<p>50% of the highest maximum demand charge billed in any month within an on-peak period (1 November to 31 March inclusive) during the preceding 11 months</p>
<ul style="list-style-type: none"> <li>▪ <b>Minimum Energy Charge</b></li> </ul>	<p>\$0.0281 per kWh applies when the Energy Charge (Part 1 and 2) divided by the total kWh is less than \$0.0281 per kWh</p>
<ul style="list-style-type: none"> <li>▪ <b>Rate Rider</b></li> </ul>	<p>5% Rate Rider applied to all charges, before taxes and levies</p>
<p><b>Industrial: Transmission Service</b></p>	<p><i>Mines, chemical plants, large sawmills, pulp and paper mills, large manufacturing</i></p>
<ul style="list-style-type: none"> <li>▪ <b>Demand Charge</b></li> </ul>	<p>\$6.263 per kVA of billing demand</p>
<ul style="list-style-type: none"> <li>▪ <b>Energy Charge</b></li> </ul>	<p>\$0.03261 per kWh applied to all kWh up to and including 90% of the customer's baseline load (CBL) in each billing year.</p> <p>\$0.07360 per kWh applied to all kWh above 90% of the CBL in each billing year.</p>
<ul style="list-style-type: none"> <li>▪ <b>Minimum Charge</b></li> </ul>	<p>\$6.027 per kVA of billing demand per billing period</p>
<ul style="list-style-type: none"> <li>▪ <b>Rate Rider</b></li> </ul>	<p>5% Rate Rider applied to all charges, before taxes and levies.</p>

Data Source: BC Hydro "Rates" – [www.bchydro.com](http://www.bchydro.com)



## NATURAL GAS

Fortis BC

[www.fortisbc.com](http://www.fortisbc.com)

Rate Territory

Inland Region

Contact

Tel: 1.888.224.2710 Emergency: 1.800.663.9911

Type of Customer	Basic Charge (\$/Day)	Delivery Charge (\$/GJ)	Commodity Charge (\$/GJ)
Small Commercial Service (RS2)	\$0.8161	\$2.994	\$1.224
Large Commercial Service (RS3)	\$4.3538	\$2.467	\$1.043
Seasonal Firm Gas Service (RS4)	\$14.4230	Off-Peak: \$1.000 Extension: \$1.777	\$5.402
General Firm Service (RS5)	\$587.00 / month	\$17.850	\$5.402
Natural Gas Vehicle Service (RS6)	\$2.0041	\$4.029	\$5.057
General Interruptible Service (RS7)	\$880.00 / month	\$1.195	\$5.402

Data Source: Fortis BC – <http://www.fortisbc.com/Pages/default.aspx>



## TELECOMMUNICATIONS

---

<b>Name of Provider</b>	<b>Telus</b>
<b>Address</b>	#5-3777 Kingsway Burnaby, BC V5H 3Z7
<b>Website</b>	<a href="http://www.telus.net">www.telus.net</a>
<b>Contact#</b>	
▪ Residential	Tel: 250-310-2255
▪ Business	Tel: 250-310-3100
<b>Service Characteristics of The Office:</b>	
▪ Switch Technology	Digital
▪ Fiber Service provided	Yes
▪ 100 Mbps LAN Service Available	Yes
▪ Monitoring- Remotely or On-Site	Remotely
▪ ISDN Available	Yes
▪ ADSL Available	Yes
▪ ADSL Available From Switch	Yes
▪ Central Office on Self-Healing Fiber Ring	No
▪ Dual Feed from Two Separate Switching Offices	No
▪ Multiple Route Diversity	Yes

---

---

<b>Name of Provider</b>	<b>Shaw Communications Inc.</b>
<b>Address</b>	#900-1067 Cordova St W, Vancouver, BC V6C 3T5
<b>Website</b>	<a href="http://www.shaw.ca">www.shaw.ca</a>
<b>Contact#</b>	
▪ Residential	604-629-3300
▪ Business	

---

---

<b>Name of Provider</b>	<b>Rogers Communications Inc.</b>
<b>Address</b>	#1600- 4710 Kingsway, Burnaby, BC V5H 4W4
<b>Website</b>	<a href="http://www.rogers.com">www.rogers.com</a>
<b>Contact#</b>	
▪ Residential	1-888-ROGERS1 (764-3771)
▪ Business	1-800-850-4217

---

<b>Name of Provider</b>	<b>Bell</b>
<b>Address</b>	#200- 2955 Virtual Way, Vancouver, BC V5M 4X6
<b>Website</b>	<a href="http://www.bell.ca">www.bell.ca</a>
<b>Contact#</b>	
▪ Residential	Tel: 310-2355
▪ Business	Tel: 310-2355

Data Source: Northern Development Research – [www.northerndevelopment.bc.ca](http://www.northerndevelopment.bc.ca)

## 8. BUSINESS SUPPORT SERVICES

Business Support Services	Machine Shop (Tool & Die)	Welding	Office Equipment Service & Repair	Temporary Employment Services
Mackenzie	1	4	1	1
McBride	0	2	0	0
Prince George	17	26	19	1
Valemount	0	1	0	1

International Support Services	Import/Export Brokers	International Courier Services	Freight Forwarders
Mackenzie	0	2	0
McBride	0	2	0
Prince George	1	6	4
Valemount	0	2	0

Data Source: Northern Development Research – [www.northerndevelopment.bc.ca](http://www.northerndevelopment.bc.ca)



## 9. GOVERNMENT

---

### REGIONAL DISTRICT

#### FRASER-FORT GEORGE

---

**Regional District of Fraser-Fort George**

<b>Form (Structure)</b>	Chair and Directors
<b>Number of Elected Officials</b>	14
<b>Chair</b>	Art Kaehn
<b>Chief Administrative Officer</b>	Jim Martin

---

### MUNICIPAL GOVERNMENT

#### DISTRICT OF MACKENZIE

<b>Form (Structure)</b>	Mayor and Council
<b>Number of Elected Officials</b>	7
<b>Mayor</b>	Pat Crook
<b>Chief Administrative Officer</b>	Peter Weeber

---

#### VILLAGE OF MCBRIDE

<b>Form (Structure)</b>	Mayor and Council
<b>Number of Elected Officials</b>	5
<b>Mayor</b>	Loranne Martin
<b>Chief Administrative Officer</b>	Kelley Williams

---

#### CITY OF PRINCE GEORGE

<b>Form (Structure)</b>	Mayor and Council
<b>Number of Elected Officials</b>	9
<b>Mayor</b>	Lyn Hall
<b>Chief Administrative Officer</b>	Kathleen Soltis

---

## VILLAGE OF VALEMOUNT

<b>Form (Structure)</b>	Mayor and Council
<b>Number of Elected Officials</b>	5
<b>Mayor</b>	Jeanette Townsend
<b>Chief Administrative Officer</b>	Ken Wiesner

## PROVINCIAL

### Government of British Columbia

<b>Form (Structure)</b>	British Parliamentary
<b>Number of Elected Officials</b>	85
<b>How Often Does Legislature Convene</b>	Varies

## PREMIER

<b>Name</b>	<b>Christy Clark</b>
<b>Affiliation</b>	British Columbia Liberal Party
<b>Year Elected</b>	May 2013
<b>Current Term Expiration</b>	4 years
<b>Allowed to Run for Another Term</b>	Yes
<b>Next Election Date</b>	May 2017

## PROVINCIAL GOVERNMENT REPRESENTATION

<b>Name of Member of Legislative Assembly (MLA)</b>	Mike Morris
<b>Total Members of Legislative Assembly</b>	1
<b>Electoral District</b>	Prince George-Mackenzie
<b>Party Affiliation</b>	BC Liberal Party

<b>Name of Member of Legislative Assembly (MLA)</b>	Shirley Bond
<b>Total Members of Legislative Assembly</b>	1
<b>Electoral District</b>	Prince George – Valemount
<b>Party Affiliation</b>	BC Liberal Party

## FEDERAL GOVERNMENT REPRESENTATION

---

<b>Name of Member of Parliament (MP)</b>	Todd Doherty
<b>Electoral District</b>	Cariboo-Prince George
<b>Year Elected</b>	2015
<b>Party Affiliation</b>	Conservative Party of Canada

---

<b>Name of Member of Parliament (MP)</b>	Cathy McLeod
<b>Electoral District</b>	Kamloops – Thompson – Cariboo
<b>Year Elected</b>	2015
<b>Party Affiliation</b>	Conservative Party of Canada

---

<b>Name of Member of Parliament (MP)</b>	Bob Zimmer
<b>Electoral District</b>	Prince George – Peace River – Northern Rockies
<b>Year Elected</b>	2015
<b>Party Affiliation</b>	Conservative Party of Canada

---



## 10. HOUSING

### HOUSING CHARACTERISTICS

Dwelling Type	Mackenzie	McBride	Prince George	Valemount
Single-detached houses	1,075	210	22,260	315
Movable dwelling	205	20	2,515	105
Other dwelling	230	25	8,830	60
Semi-detached houses	0	0	1,270	5
Row houses	115	15	1,570	10
Apartments, duplex	110	0	6,355	40
Other single-attached house	5	5	25	0
<b>Total private dwellings</b>	<b>1,890</b>	<b>312</b>	<b>37,176</b>	<b>592</b>

*Data Source: StatsCan – 2011 Census – “Community Profile”*

### AVERAGE HOUSING VALUES

Municipality	Single Family Homes	Multi-Family Homes	Average Property Tax & Charges
District of Mackenzie	\$159,000	-	-
Village of McBride	\$141,000	-	-
City of Prince George	\$251,000	-	-
Village of Valemount	\$160,000	-	-

*Data Source: BC Assessment*



## 11. TAXATION RATES

### CORPORATE INCOME TAX

	Small Business	Manufacturing	Non-Manufacturing
<b>Federal</b>			
▪ Rate	11%	16.5%	16.5%
▪ Formula (Sales, Property & Payroll)	n/a	n/a	n/a
▪ Accelerated Depreciated Permitted	Yes	Yes	Yes
<b>Provincial</b>			
▪ Rate	2.5%	10.0%	10.0%
▪ Formula (Sales, Property & Payroll)	Sales & Payroll	Sales & Payroll	Sales & Payroll
▪ Accelerated Depreciated Permitted	No	No	No
<b>Local</b>			
<i>British Columbia has no local taxes</i>			
<b>Total Federal and Provincial Corporate Income Tax</b>	<b>13.5%</b>	<b>26.5%</b>	<b>26.5%</b>

### PERSONAL INCOME TAX

	Federal	State/Provincial	Local
<b>Earned Income</b>	15 – 29%	5.06 – 14.7%	-
<b>Unearned Income (e.g. Dividends)</b>	0 – 14.55%	0 – 3.92%	-
<b>Capital Gains</b>	7.5 – 14.5 %	2.08 – 7.35%	-

### SALES / USE TAX

	Rate	Notes
<b>Goods and Services Tax</b>	5%	GST on business inputs is fully recoverable
<b>B.C. Sales Tax</b>	7%	B.C. sales tax
<b>Total (Effective Combined Rate) Business</b>	12%	Net of GST 0% for production machinery and equipment for eligible manufacturers

## SALES TAX RATE BY UTILITY

	Yes/No	Rate	Notes
Electric Power	Yes	5%	5% GST is fully recoverable
Natural Gas	Yes	5%	5% GST is fully recoverable subject to 0.4% tax on energy products to raise revenue for the ICE fund
Fuel Oil	Yes	5%	5% GST is fully recoverable subject to 0.4% tax on energy products to raise revenue for the ICE fund
Water	No	0%	-
Sewer	No	0%	-
Hazardous Waste Disposal	Yes	12%	5% GST is fully recoverable

## TELEPHONE SUBJECT TO SALES/USE TAX

	Yes/No	Rate	Notes
Local	Yes	5%	5% GST is fully recoverable
Long Distance	Yes	12%	5% GST is fully recoverable

## MACHINERY AND EQUIPMENT SUBJECT TO SALES/USE TAX

	Yes/No	Rate	Notes
Production	No	0%	-
Non-Production	Yes	12%	5% GST is fully recoverable
Pollution Control	Yes	12%	5% GST is fully recoverable
Office Equipment & Fixtures	Yes	12%	5% GST is fully recoverable

## SALES/USE TAX ON TANGIBLE PROPERTY

	Yes/No	Rate	Notes
Office Building Construction Materials	Yes	12%	5% GST is fully recoverable
Industrial Building Construction Materials	Yes	12%	5% GST is fully recoverable
Manufactures Raw Materials	No	0%	-
Standard Software	Yes	12%	5% GST is fully recoverable
Custom Software	Yes	12%	5% GST is fully recoverable

## SALES/USE TAX ON INTANGIBLE PROPERTY

	Yes/No	Rate	Notes
Accounts Receivable	No	0%	-
Capital Stock	No	0%	-
Stock/Bond Transaction Fee	No	0%	-

Data Source: Government of BC - [http://www2.gov.bc.ca/assets/gov/topic/BED47DA4EBDBA60A5F28622B8B2E1451/uploads/whats\\_taxable\\_whats\\_not.pdf](http://www2.gov.bc.ca/assets/gov/topic/BED47DA4EBDBA60A5F28622B8B2E1451/uploads/whats_taxable_whats_not.pdf)

## PROPERTY TAX

### DISTRICT OF MACKENZIE

Levy	Residential	Utility	Major Industry	Light Industry	Business	Non-Profit	Farm
General Municipal	6.622	37.786	29.955	27.006	15.115	6.622	6.622
Regional District	0.755	2.643	2.567	2.567	1.85	0.755	0.755
Hospital	0.378	1.324	1.286	1.286	0.927	0.378	0.378
Police	0.3559	1.2455	1.2099	1.2099	0.8719	0.3559	0.3559
MFA	0.0002	0.0007	0.0007	0.0007	0.0005	0.0002	0.0002
BCAA	0.0599	0.5113	0.5113	0.1843	0.1843	0.0599	0.0599
School	3.1607	14.2	2.56	2.56	6.4	3.4	6.9
<b>TOTAL</b>	<b>11.3313</b>	<b>57.7109</b>	<b>38.0901</b>	<b>34.8141</b>	<b>25.3483</b>	<b>11.5706</b>	<b>15.0706</b>

Data Source: District of Mackenzie – [www.district.mackenzie.bc.ca](http://www.district.mackenzie.bc.ca)

### VILLAGE OF MCBRIDE

Levy	Residential	Utility	Major Industry	Light Industry	Business	Non-Profit	Farm
General Municipal	6.4000	39.9999	0.0000	43.9795	15.3600	6.4000	6.4000
Regional District	4.5351	15.8729	15.4193	15.4193	11.1110	4.5351	4.5351
Hospital	0.3783	1.3241	1.2863	1.2863	0.9269	0.3783	0.3783
Police	0.3982	1.3939	1.3540	1.3540	0.9757	0.3982	0.3982
MFA	0.0002	0.0007	0.0007	0.0007	0.0005	0.0002	0.0002
BCAA	0.0621	0.5114	0.5114	0.1896	0.1896	0.0621	0.0621
School	3.1550	14.100	0.1000	6.6000	6.6000	3.4000	6.8000
<b>TOTAL</b>	<b>14.9289</b>	<b>73.2029</b>	<b>25.1717</b>	<b>68.8294</b>	<b>35.1637</b>	<b>15.1739</b>	<b>18.5739</b>

Data Source: Village of McBride – [www.mcbride.ca](http://www.mcbride.ca)

## CITY OF PRINCE GEORGE

Levy	Residential	Utility	Major Industry	Light Industry	Business	Non-Profit	Farm
<b>General Municipal</b>	6.70534	35.77529	42.09151	24.04037	14.31011	6.70534	4.56959
<b>Regional District</b>	0.54353	1.90236	1.84801	1.84801	1.33165	0.54353	0.54353
<b>Hospital</b>	0.37838	1.32434	1.28650	1.28650	0.92704	0.37838	0.37838
<b>MFA</b>	0.0002	0.0007	0.0007	0.0007	0.0005	0.0002	0.0002
<b>BCAA</b>	0.06210	0.51140	0.51140	0.18960	0.18960	0.06210	0.06210
<b>School</b>	3.15500	14.1000	0.10000	6.60000	6.60000	3.40000	6.80000
<b>TOTAL</b>	11.91810	59.06938	54.68994	33.82667	25.69694	12.16310	9.73271

Data Source: City of Prince George – “Tax Rates” – [www.princegeorge.ca](http://www.princegeorge.ca)

## VILLAGE OF VALEMOUNT

Property Class	Total Tax Rates Per \$1,000 of assessed value
<b>Residential</b>	4.264
<b>Utilities</b>	12.949
<b>Major Industry</b>	-
<b>Light Industry</b>	52.041
<b>Business/Other</b>	8.504
<b>Recreation Property</b>	8.648

Data Source: Village of Valemount – [www.valemount.ca](http://www.valemount.ca)  
 Property Tax rates effective 2011, Property Tax rates per \$1000 Assessed Personal Property (M&E, Inventory, Other)  
 Municipal Note: BC does not have Personal Property Taxes.



## 12. INTERNATIONAL RESOURCES

---

### INVESTMENT AND BUSINESS SUPPORT OFFICES

---

#### Mackenzie Chamber of Commerce

<b>Contact Name</b>	Lynda Kearns
<b>Address</b>	PO Box 880, 88 Centennial, Mackenzie, BC V0J 2C0
<b>Phone Number</b>	250-997-5459
<b>E-Mail</b>	<a href="mailto:office@mackenziechamber.bc.ca">office@mackenziechamber.bc.ca</a>

---

#### McBride & District Chamber of Commerce

<b>Contact Name</b>	Bill Arnold
<b>Address</b>	PO Box 2, McBride, BC V0J 2E0
<b>Phone Number</b>	250-569-3366
<b>E-Mail</b>	<a href="mailto:come2mcbride@telus.net">come2mcbride@telus.net</a>

---

#### Prince George Chamber of Commerce

<b>Contact Name</b>	Sharon Tozer
<b>Address</b>	770 Brunswick Street, Prince George, BC V2L 2C2
<b>Phone Number</b>	250-562-2454
<b>E-Mail</b>	<a href="mailto:chamber@pgchamber.bc.ca">chamber@pgchamber.bc.ca</a>

---

#### Valemount Chamber of Commerce

<b>Contact Name</b>	Marie Birkbeck
<b>Address</b>	PO Box 690, 1433 Sixth Avenue, Valemount, BC V0E 2Z0
<b>Phone Number</b>	250-566-0061
<b>E-Mail</b>	<a href="mailto:info@valemountchamber.com">info@valemountchamber.com</a>

---

#### City of Prince George Economic Development

<b>Contact Name</b>	Melissa Barcellos, Economic Development Manager
<b>Address</b>	1100 Patricia Boulevard, Prince George, BC V2L 3V9
<b>Phone Number</b>	250-561-7633
<b>E-Mail</b>	<a href="mailto:Melissa.barcellos@princegeorge.ca">Melissa.barcellos@princegeorge.ca</a>

---

---

### Northern Development Initiative Trust

<b>Contact Name</b>	Dean Mckinley, Director, Economic Development
<b>Address</b>	301 – 1268 Fifth Avenue, Prince George BC V2L 3L2
<b>Phone Number</b>	250-561-2525
<b>E-Mail</b>	<a href="mailto:dean@northerndevlopment.bc.ca">dean@northerndevlopment.bc.ca</a>

---

### Community Futures Fraser-Fort George

<b>Contact Name</b>	Susan Stearns, General Manager
<b>Address</b>	Box 519, McBride, BC V0J 2E0 Canada
<b>Phone Number</b>	Tel: 250-569-2229
<b>Webpage</b>	<a href="http://www.cfdc.bc.ca">www.cfdc.bc.ca</a>

---

### 16/97 Economic Alliance

<b>Contact</b>	Susan Stearns, Chair
<b>Phone Number</b>	Tel: 250-562-9622
<b>Webpage</b>	<a href="http://www.1697alliance.com">www.1697alliance.com</a>

---

### Owner-Operator's Business Association of Canada

<b>Contact</b>	Joanne Ritchie, Executive Director
<b>Phone Number</b>	Tel: 613-237-6222
<b>Webpage</b>	<a href="http://www.obac.ca">www.obac.ca</a>

---

### Ministry of Jobs, Tourism, and Skills Training – Regional Economic Operations

<b>Contact Name</b>	Rick Braam, Regional Project Manager
<b>Address</b>	Bag 5000, Smithers, BC V0J 2N0
<b>Phone Number</b>	250-847-7797
<b>E-Mail</b>	<a href="mailto:rick.braam@gov.bc.ca">rick.braam@gov.bc.ca</a>

---

### Ministry of Jobs, Tourism and Skills Training – International Investment and Company Attraction

<b>Contact Name</b>	Michael Track, A/Executive Director – Investor Services
<b>Address</b>	999 Canada Place, Suite 730, Vancouver BC V6C 3E1
<b>Phone Number</b>	Tel: 604-775-2202
<b>E-Mail</b>	<a href="mailto:michael.track@gov.bc.ca">michael.track@gov.bc.ca</a>

---

## FINANCIAL INSTITUTIONS

Name of Company	Address	Phone Number	Website
Bank of Montreal	Prince George	250-614-4250	<a href="http://www.bmo.com">www.bmo.com</a>
Bank of Nova Scotia	McBride	250-569-2241	<a href="http://www.scotiabank.com">www.scotiabank.com</a>
Bank of Nova Scotia	Mackenzie	250-997-3223	<a href="http://www.scotiabank.com">www.scotiabank.com</a>
Bank of Nova Scotia	Prince George	250-960-4700	<a href="http://www.scotiabank.com">www.scotiabank.com</a>
Business Development Bank of Canada	Prince George	250-561-5323	<a href="http://www.bdc.ca">www.bdc.ca</a>
Canadian Imperial Bank of Commerce	Valemount	250-566-4483	<a href="http://www.cibc.com">www.cibc.com</a>
Canadian Imperial Bank of Commerce	Prince George	250-614-6444	<a href="http://www.cibc.com">www.cibc.com</a>
Canadian Western Bank	Prince George	250-612-0123	<a href="http://www.cwbank.com">www.cwbank.com</a>
H&R Block	Valemount	250-566-4210	<a href="http://www.hrblock.ca">www.hrblock.ca</a>
Integriss Credit Union	Prince George	250-612-3456	<a href="http://www.integriscu.com">www.integriscu.com</a>
Royal Bank of Canada	Mackenzie	250-997-3213	<a href="http://www.rbc.com">www.rbc.com</a>
Royal Bank of Canada	Prince George	250-960-4530	<a href="http://www.rbc.com">www.rbc.com</a>
Spruce Credit Union	Prince George	250-562-5415	<a href="http://www.sprucecu.bc.ca">www.sprucecu.bc.ca</a>
TD Bank Group	Prince George	250-612-6000	<a href="http://www.td.com">www.td.com</a>
Western Union	McBride	250-569-2241	<a href="http://www.westernunion.ca">www.westernunion.ca</a>

Data Source: Northern Development Research – [www.northerndevelopment.bc.ca](http://www.northerndevelopment.bc.ca)

## EMPLOYMENT ASSISTANCE

Name of Company	Address	Phone Number	Website
Mackenzie Employment Services Centre	540 Mackenzie Blvd, Mackenzie, BC V0J 2C0	250-977-7208	<a href="http://www.workbcmackenzie.ca">www.workbcmackenzie.ca</a>
Robson Valley Home Support Society	942 Third Avenue, McBride, BC V0J 2E0	250-569-2266	
Trades Central Training Centre	200-1268 Fifth Avenue, Prince George, BC	250-561-0531	
Valemount Learning Centre	PO Box 789, 99 Gorse St., Valemount, BC V0E 2Z0	250-566-4601	<a href="http://www.valemountlearningcentre.org">www.valemountlearningcentre.org</a>

Data Source: Northern Development Research – [www.northerndevelopment.bc.ca](http://www.northerndevelopment.bc.ca)

# 13. QUALITY OF LIFE

## CLIMATE

**Location: Regional District of Fraser-Fort George, BC, Canada**

**Mackenzie:** 55.338689 N, -123.094347 W

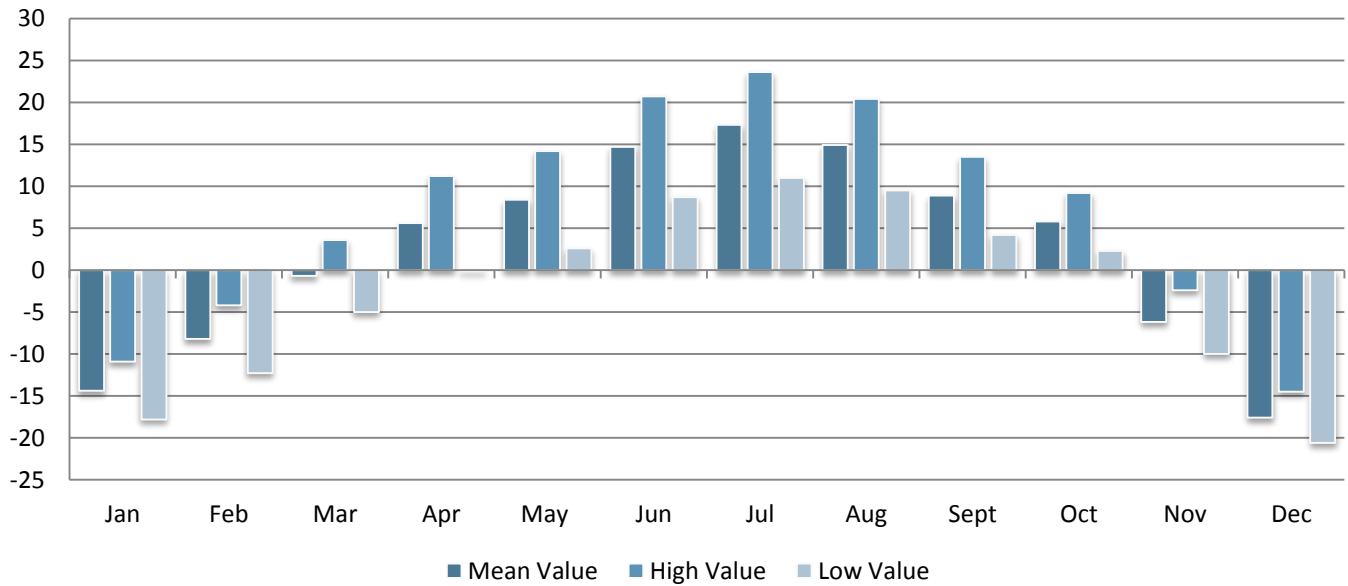
**McBride:** 53.305185 N, -120.161433 W

**Prince George:** 53.926177 N, -122.751045 W

**Valemount:** 52.832173 N, -119.264245 W

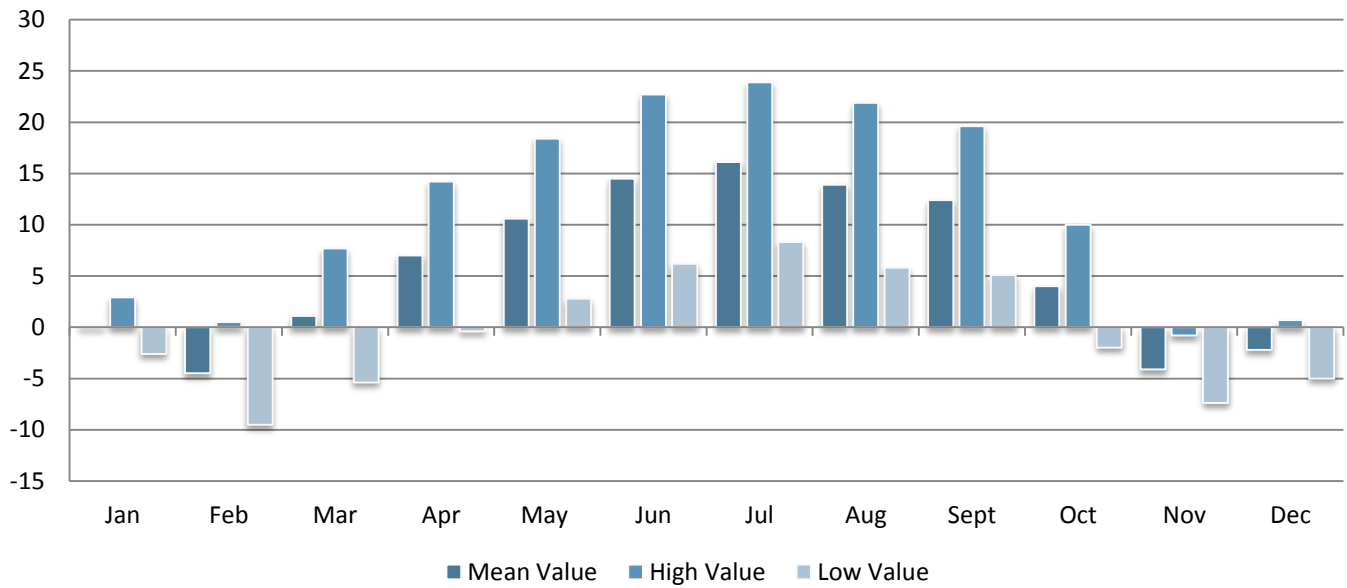


### AVERAGE TEMPERATURE IN DEGREES CELCIUS BY MONTH – MACKENZIE



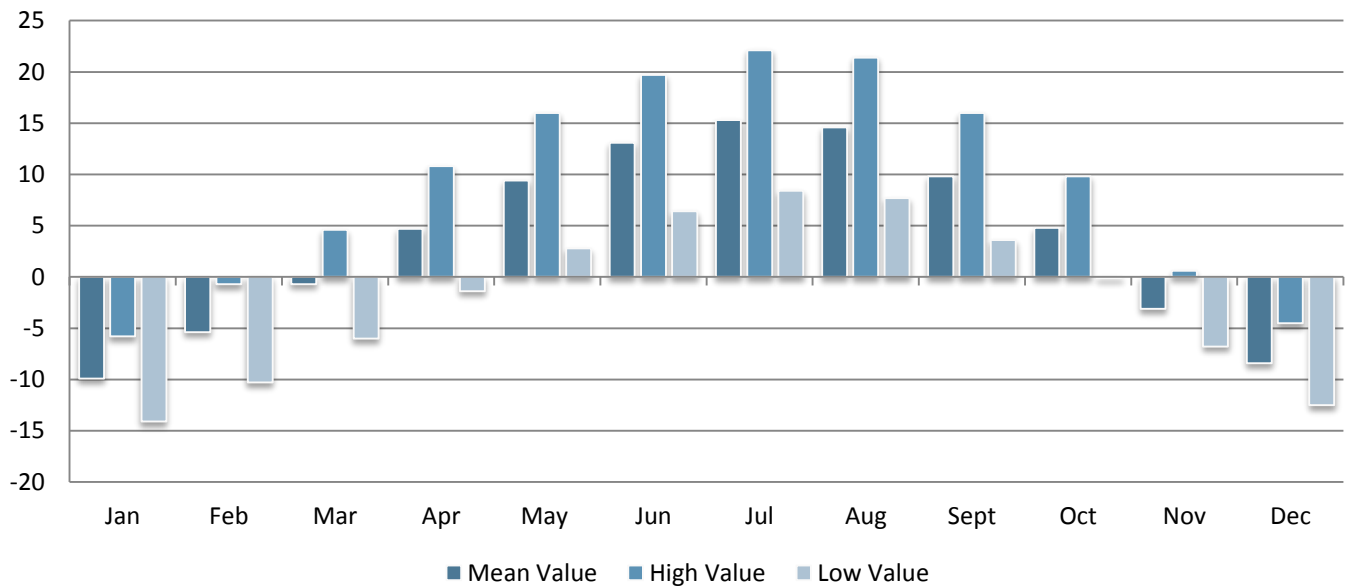
Data Source: Environment Canada - "National Climate Data And information Archive" – [www.climate-charts.com/Countries/Canada.html#BC](http://www.climate-charts.com/Countries/Canada.html#BC)

## AVERAGE TEMPERATURE IN DEGREES CELCIUS BY MONTH - MCBRIDE



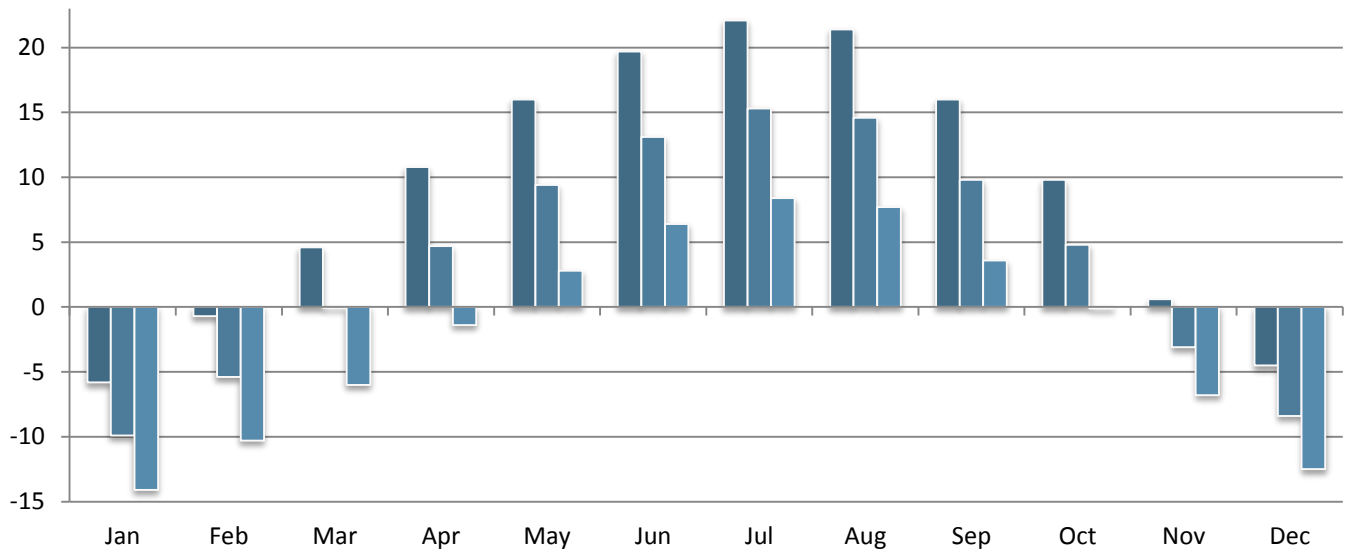
Data Source: Environment Canada - "National Climate Data And information Archive" – [www.climate-charts.com/Countries/Canada.html#BC](http://www.climate-charts.com/Countries/Canada.html#BC)

## AVERAGE TEMPERATURE IN DEGREES CELCIUS BY MONTH – PRINCE GEORGE



Data Source: Environment Canada - "National Climate Data And information Archive" – [www.climate-charts.com/Countries/Canada.html#BC](http://www.climate-charts.com/Countries/Canada.html#BC)

# AVERAGE TEMPERATURE IN DEGREES CELCIUS BY MONTH - VALEMOUNT



Data Source: Environment Canada - "National Climate Data And information Archive" – [www.climate-charts.com/Countries/Canada.html#BC](http://www.climate-charts.com/Countries/Canada.html#BC)



## CULTURE

### TOP ANNUAL EVENTS - MACKENZIE

---

<b>Event</b>	<b>Date</b>
Alexander Mackenzie Days	June
Cabin Fever Carnival	February
Christmas Celebration	December
Festival of Bells Craft Fair	November
Leisure Fair	September
Mackenzie Elks Family Fishing Derby	June
Show and Shine	July
Trade Show	May

---

### TOP ANNUAL EVENTS - MCBRIDE

---

<b>Event</b>	<b>Date</b>
Adventure Weekend	June
Canada Day Fireworks	July
Christmas Gala	December
Festival of Lights	December
Ice Cream Social	August
Pioneer Days Celebrations	June
Robson Valley Fall Fair	August
Robson Valley Music Festival	August

---

### TOP ANNUAL EVENTS – PRINCE GEORGE

---

<b>Event</b>	<b>Date</b>
BC Rivers Day Music Festival	September
Festival of Trees	December
Homestead Days	August
Summerfest	August
The Northern BC Exhibition	August
Canada Day Fort George Park	July 1 <sup>st</sup>

---

## TOP ANNUAL EVENTS – VALEMOUNT

Event	Date
Birdwatching Festival	June
Valemountain Days	June
Winter Festival	February

Data Source: Northern Development Research – [www.northerndevelopment.bc.ca](http://www.northerndevelopment.bc.ca)

## CULTURAL PLACES AND AMENITIES

Amenity	Number
▪ Theatres	4
▪ Museums	5
▪ Community halls	5
▪ Art Galleries	4
▪ Libraries	5
▪ National Historic Sites	6

Data Source: Northern Development Research – [www.northerndevelopment.bc.ca](http://www.northerndevelopment.bc.ca)

## CULTURE AND RECREATION

Amenity	Number
Number of Enclosed Shopping Malls	3
<b>Religion</b>	
▪ Catholic Churches	12
▪ Protestant Churches	58
▪ Synagogues	0
▪ Other Religious Institutions	10

Data Source: Northern Development Research – [www.northerndevelopment.bc.ca](http://www.northerndevelopment.bc.ca)



## RECREATIONAL AMENITIES - MACKENZIE

---

<b>Amenity</b>	<b>Activity</b>
Alexander-Mackenzie Landing	Camping, Hiking, Boating, Fishing
Carp Lake Provincial Park	Camping, Boating, Fishing
Gantahaz Lake	Boating
Heather-Dina Lakes Provincial Park	Camping, Canoeing, Swimming
John Dahl Regional Park	Skiing, Biking, Sledding
Little Mac Ski Hill	Skiing, Snowboarding
Mackenzie Golf & Country Club	Golfing
Mackenzie Lanes	Bowling
Mackenzie Recreation Centre	Hockey, Curling, Swimming
Morfee Lake	Swimming, Boating, Fishing
Powder King Ski Mountain	Skiing, Snowboard
Tennis Courts	Tennis
Tudyah Lake Provincial Park	Camping, Boating
Whiskers Point Provincial Park	Camping, Swimming, Fishing, Boating

---

## RECREATIONAL AMENITIES - MCBRIDE

---

<b>Amenity</b>	<b>Activity</b>
Ancient Cedar Forest	Hiking
Beaver Falls Trail	Hiking
Belle Mountaing	Cross Country Skiing
CMH Heli-Skiing	Heli-Skiing
Dore River, Fraser River	River Rafting, Fishing, Boating
Kristie Glacier	Snowshoeing
McBride Peak	Hiking, Skiing
Mount McBride	Snowmobiling
Northern BC Hunting Territory	Hunting
Ozalenka Park	Hiking, Camping
Robson Valley Community Centre	Conferences, Social
Robson Valley Recreation Centre	Skating, Curling, Fitness

---

## RECREATIONAL AMENITIES – PRINCE GEORGE

Amenity	Activity
Aberdeen Glen Golf Course	Golfing
Alder Hills Golf Course	Golfing
Aspen Grove Golf Course	Golfing
Bearpaw Heli-Skiing	Heli-Skiing
Berman Lake	Swimming, Camping, Hiking
Crooked River Provincial Park	Hiking, Canoeing, Cycling, Camping
Dog Power Adventures	Dog Sledding
Forests for the World	Hiking
Goodsir Nature Park	Hiking
Harold Mann Regional Park	Swimming, Camping, Hiking
Kristian Winther Regional Park	Swimming, Camping, Hiking
LC Gunn Park	Hiking
McMillan Creek Regional Park	Hiking
Ness Lake	Swimming, Camping, Hiking
Otway Nordic Ski Centre	Cross Country Skiing
Prince George Aquatic Centre (2)	Swimming
Prince George Arenas (6)	Hockey, Fitness, Skating
Prince George Golf and Curling Club	Golf, Curling
Purden Lake	Camping, Swimming, Fishing
Purden Ski Hill	Skiing, Snowboarding
Tabor Lake	Camping, Swimming, Fishing
Tabor Ski Hill	Skiing, Snowboarding
West Lake	Swimming, Fishing



## RECREATIONAL AMENITIES - VALEMOUNT

Amenity	Activity
Canoe Valley Recreation Centre	Skating, Fitness
Cedarside Regional Park	Swimming
CMH Heli-Skiing	Heli-Skiing
George Hicks Regional Park	Fishing, Wildlife viewing
Jasper National Park	Hiking, Biking, Skiing
Mount Robson Provincial Park	Hiking, Biking, Skiing
Starratt Wildlife Sanctuary	Hiking, Wildlife Viewing
VARDA	Snowmobile Trail System
Westridge	ATVing, Snowmobiling, Skiing
Valemount Pines Golf and RV Park	Golf, Camping

Data Source: Northern Development Research – [www.northerndevelopment.bc.ca](http://www.northerndevelopment.bc.ca)



## HEALTH

### HOSPITALS

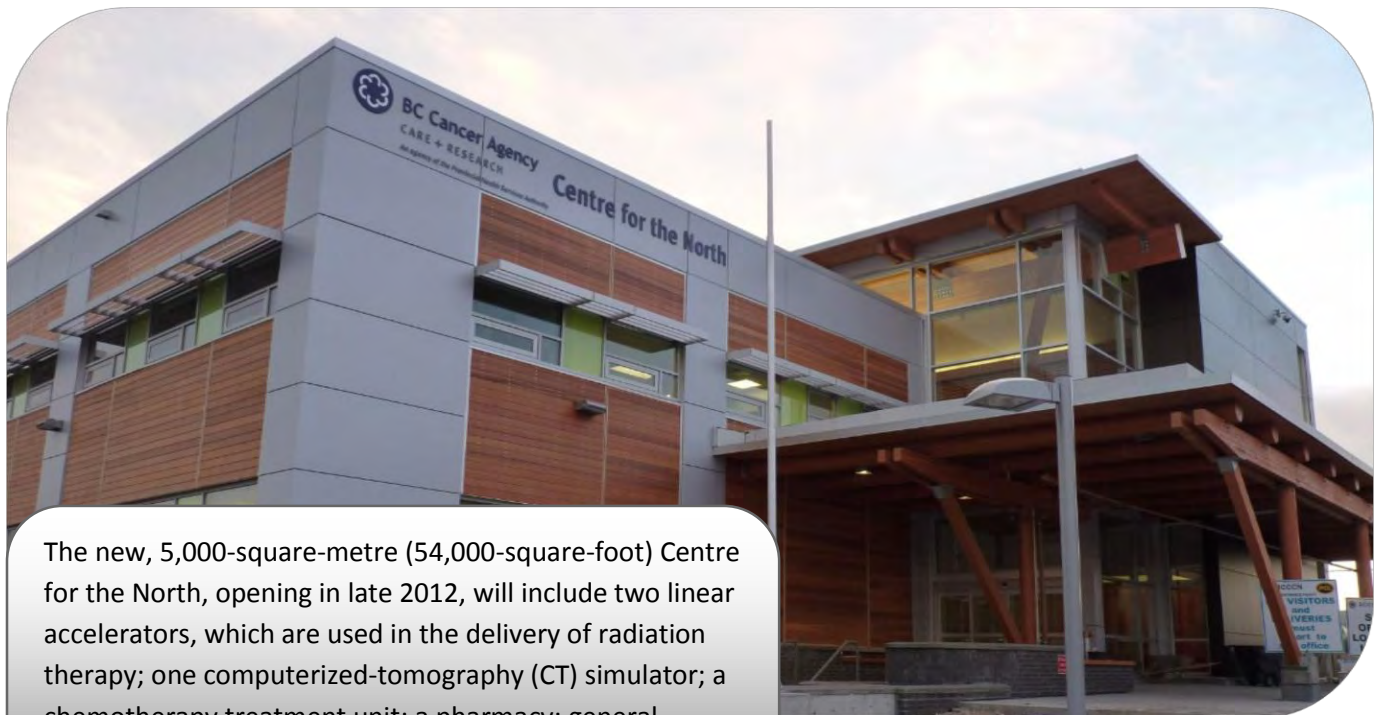
Hospital	Location	Teaching Hospital	Number of Beds	Outpatient Clinic	Contact	Phone
Mackenzie & District Hospital	Mackenzie	No	9	Yes	45 Centennial Drive Mackenzie, BC V0J 2C0	250-997-3263
McBride & District Hospital	McBride	No	16	No	Box 128, 1135 5 <sup>th</sup> Ave McBride, BC V0J 2E0	250-569-2251
University Hospital of Northern BC	Prince George	Yes	220	Yes	1475 Edmonton Street Prince George, BC V2M 1S2	250-565-2000
Valemount Health Centre	Valemount	No	0	No	1455 5 <sup>th</sup> Ave, Valemount, BC V0E 2Z0	250-556-9138

Data Source: Northern Development Research – [www.northerndevlopment.bc.ca](http://www.northerndevlopment.bc.ca)

### PHYSICIANS AND DENTISTS

Health Providers	Number
Physicians	98
Dentists	43

Data Source: Northern Development Research – [www.northerndevlopment.bc.ca](http://www.northerndevlopment.bc.ca)



The new, 5,000-square-metre (54,000-square-foot) Centre for the North, opening in late 2012, will include two linear accelerators, which are used in the delivery of radiation therapy; one computerized-tomography (CT) simulator; a chemotherapy treatment unit; a pharmacy; general outpatient clinics; professional staff offices; and a parkade.



## REGIONAL DISTRICT of Fraser-Fort George

**Jim Martin**

Chief Administrative Officer

### Regional District of Fraser-Fort George

155 George Street, Prince George, BC V2L 1P8

Tel: 250-960-4400

Email: [district@rdffg.bc.ca](mailto:district@rdffg.bc.ca)

Website: [www.rdffg.bc.ca](http://www.rdffg.bc.ca)

Facebook: [facebook.com/rdffg](https://facebook.com/rdffg)

### Robson Valley Region

Email: [RVR@rdffg.bc.ca](mailto:RVR@rdffg.bc.ca)

Website: [www.DiscoverRVR.ca](http://www.DiscoverRVR.ca)

Facebook: [RobsonValleyRegion](https://RobsonValleyRegion)



Northern Development Initiative Trust

Contact for information on financial incentives for manufacturing companies

[www.northerndevelopment.bc.ca](http://www.northerndevelopment.bc.ca)



TRADE AND INVEST  
BRITISH COLUMBIA

Invest BC

Contact for investor site selection and expansion services.

[www.investbc.com](http://www.investbc.com)